

## ATP23 Polyclonal Antibody

**Catalog No.** E-AB-64359

*Note:* Centrifuge before opening to ensure complete recovery of vial contents.

### Description

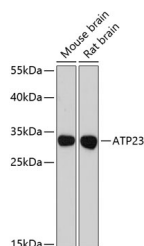
<b>Reactivity</b>	Mouse,Rat
<b>Immunogen</b>	Recombinant fusion protein of human ATP23 (NP_150592.1).
<b>Host</b>	Rabbit
<b>Isotype</b>	IgG
<b>Purification</b>	Affinity purification
<b>Conjugation</b>	Unconjugated
<b>Buffer</b>	PBS with 0.02% sodium azide, 50% glycerol, pH7.3.

### Applications

### Recommended Dilution

**WB** 1:1000-1:3000

### Data



Western blot analysis of extracts of various cell lines using ATP23 Polyclonal Antibody at dilution of 1:3000.

**Observed Mw:28kDa**  
**Calculated Mw:28kDa**

### Preparation & Storage

**Storage** Store at -20°C. Avoid freeze / thaw cycles.

### Background

The protein encoded by this gene is amplified in glioblastomas and interacts with the DNA binding subunit of DNA-dependent protein kinase. This kinase is involved in double-strand break repair (DSB), and higher expression of the encoded protein increases the efficiency of DSB. In addition, comparison to orthologous proteins strongly suggests that this protein is a metalloprotease important in the biosynthesis of mitochondrial ATPase. Several transcript variants encoding different isoforms have been found for this gene.

### For Research Use Only