

Elab Fluor® Red 780 Anti-Mouse Ly6C Antibody[Monts 1]

Catalog No.	E-AB-F1121US	Reactivity	Mouse
Storage	Store at 2~8°C, Avoid freeze / thaw cycles	Applications	FCM

Important Note: Centrifuge before opening to ensure complete recovery of vial contents.

Antigen Information

Alternate Names	Lymphocyte antigen 6 complex, locus C, Ly 6C, Ly6c1, Ly6c2
Uniprot ID	P0CW03
Gene ID	17067
Background	Most hematopoietic cells express one or more members of Ly-6 family. The expression of Ly-6 varies with development stage and activation. Ly-6C is a 14-17 kD GPI-linked surface protein expressed on mouse monocyte/macrophage cells, endothelial cells, neutrophils, and some T cell subsets. Ly-6C is reported to be an indicator of memory CD8+ T cells.

Product Details

Form	Liquid
Concentration	0.5 mg/mL
Size	25µg/100µg
Clone No.	Monts 1
Host	Rat
Isotype	Rat IgG2a, κ
Reactivity	Mouse
Application	FCM
Isotype Control	Elab Fluor® Red 780 Rat IgG2a, κ Isotype Control[2A3] [Product E-AB-F09833S]
Storage Buffer	Phosphate buffered solution, pH 7.2, containing 0.09% stabilizer and 1% protein protectant.
Shipping	Biological ice pack at 4 °C
Stability & Storage	Keep as concentrated solution. Store at 2~8°C and protected from prolonged exposure to light. Do not freeze. This product is guaranteed up to one year from purchase.

Fluorophore

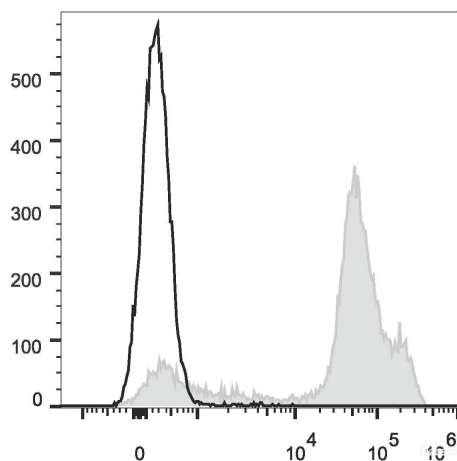
Conjugation: Elab Fluor® Red 780

Elab Fluor® Red 780 is designed to be excited by the Red (627-640 nm) laser and detected using an optical filter centered near 770 nm (e.g., a 780/60 nm bandpass filter).

Recommended usage

Each lot of this antibody is quality control tested by flow cytometric analysis. Please check your vial before the experiment. Since applications vary, the appropriate dilutions must be determined for individual use. We suggest each investigator should titrate the reagent to obtain optimal results [The recommended concentration is 0.1-1 µg/10⁶ cells in 100 µL volume].

Product data



C57BL/6 murine bone marrow cells are stained with Elab Fluor® Red 780 Anti-Mouse Ly6C Antibody (filled gray histogram). Unstained bone marrow cells (empty black histogram) are used as control.

Related Information

1. Sample Preparation for Flow Cytometry <https://www.elabscience.com/List-detail-5594.html>
2. Staining Cell Surface Targets for Flow Cytometry <https://www.elabscience.com/List-detail-5568.html>
3. Flow Cytometry Troubleshooting Tips <https://www.elabscience.com/List-detail-5593.html>
4. How to select the appropriate detection channel through the spectrogram? <https://www.elabscience.com/List-detail-459742.html>