

PLCH1 Polyclonal Antibody

Catalog No. E-AB-64369

Note: Centrifuge before opening to ensure complete recovery of vial contents.

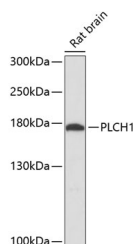
Description

| | |
|---------------------|--|
| Reactivity | Rat |
| Immunogen | Recombinant fusion protein of human PLCH1 (NP_055811.1). |
| Host | Rabbit |
| Isotype | IgG |
| Purification | Affinity purification |
| Conjugation | Unconjugated |
| Buffer | PBS with 0.02% sodium azide, 50% glycerol, pH7.3. |

Applications Recommended Dilution

WB 1:1000-1:3000

Data



Western blot analysis of extracts of Rat brain using PLCH1 Polyclonal Antibody at dilution of 1:3000.

Observed Mw:175kDa

Calculated Mw:114kDa/115kDa/184kDa/189kDa

Preparation & Storage

Storage Store at -20°C. Avoid freeze / thaw cycles.

Background

PLCH1 is a member of the PLC-eta family of the phosphoinositide-specific phospholipase C (PLC) superfamily of enzymes that cleave phosphatidylinositol 4,5-bisphosphate (PtdIns(4,5)P₂) to generate second messengers inositol 1,4,5-trisphosphate (IP₃) and diacylglycerol (DAG).

For Research Use Only