

# PLCH1 Polyclonal Antibody

Catalog Number:E-AB-64369

**Note:** Centrifuge before opening to ensure complete recovery of vial contents.

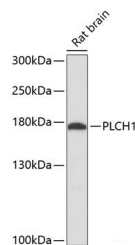
## Description

<b>Reactivity</b>	Rat
<b>Immunogen</b>	Recombinant fusion protein of human PLCH1 (NP_055811.1).
<b>Host</b>	Rabbit
<b>Isotype</b>	IgG
<b>Purification</b>	Affinity purification
<b>Conjugation</b>	Unconjugated
<b>Formulation</b>	PBS with 0.02% sodium azide, 50% glycerol, pH7.3.

## Applications Recommended Dilution

<b>WB</b>	1:1000-1:3000
-----------	---------------

## Data



Western blot analysis of extracts of Rat brain using PLCH1 Polyclonal Antibody at dilution of 1:3000.

**Observed Mw:175kDa**

**Calculated Mw:114kDa/115kDa/184kDa/189kDa**

## Preparation & Storage

**Storage** Store at -20°C. Avoid freeze / thaw cycles.

## Background

PLCH1 is a member of the PLC-eta family of the phosphoinositide-specific phospholipase C (PLC) superfamily of enzymes that cleave phosphatidylinositol 4,5-bisphosphate (PtdIns(4,5)P<sub>2</sub>) to generate second messengers inositol 1,4,5-trisphosphate (IP<sub>3</sub>) and diacylglycerol (DAG).

## For Research Use Only

A Reliable Research Partner in Life Science and Medicine

Toll-free: 1-888-852-8623

Web: [www.elabscience.com](http://www.elabscience.com)

Tel: 1-832-243-6086

Email: [techsupport@elabscience.com](mailto:techsupport@elabscience.com)

Fax: 1-832-243-6017