

**Note:** Centrifuge before opening to ensure complete recovery of vial contents.

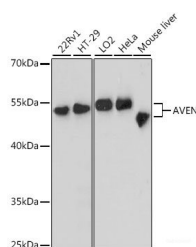
## Description

<b>Reactivity</b>	Human,Rat
<b>Immunogen</b>	Recombinant fusion protein of human AVEN (NP_065104.1).
<b>Host</b>	Rabbit
<b>Isotype</b>	IgG
<b>Purification</b>	Affinity purification
<b>Conjugation</b>	Unconjugated
<b>Formulation</b>	PBS with 0.02% sodium azide, 50% glycerol, pH7.3.

## Applications Recommended Dilution

<b>WB</b>	1:1000-1:3000
-----------	---------------

## Data



Western blot analysis of extracts of various cell lines  
using AVEN Polyclonal Antibody at dilution of  
1:3000.

**Observed Mw:55kDa**  
**Calculated Mw:38kDa**

## Preparation & Storage

**Storage** Store at -20°C. Avoid freeze / thaw cycles.

## Background

AVEN, a cell death regulator, is an important signal inducer in acute leukemia. AVEN is a highly conserved peripheral membrane protein that protects the cell against the proteolytic activation of caspases as well as Apaf-1 mediated apoptosis by interfering with Apaf-1's ability to self-associate. Bcl-2 and Bad also interact with AVEN to prevent apoptosis. AVEN is highly expressed in ovary, heart, thymus, spleen, testis and colon, but can also be detected in other tissues. Erythropoietin and methylprednisolone may play important roles in the expression of AVEN in cardiac tissue, especially after a traumatic brain injury. In young patients suffering from acute lymphoblastic leukemia (ALL), AVEN expression may be a useful tool in prognosis prediction.

## For Research Use Only

A Reliable Research Partner in Life Science and Medicine

Toll-free: 1-888-852-8623

Web: [www.elabscience.com](http://www.elabscience.com)

Tel: 1-832-243-6086

Email: [techsupport@elabscience.com](mailto:techsupport@elabscience.com)

Fax: 1-832-243-6017