

TAL1 Polyclonal Antibody

Catalog Number:E-AB-64380

Note: Centrifuge before opening to ensure complete recovery of vial contents.

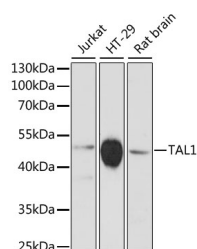
Description

| | |
|---------------------|---|
| Reactivity | Human,Rat |
| Immunogen | Recombinant fusion protein of human TAL1 (NP_003180.1). |
| Host | Rabbit |
| Isotype | IgG |
| Purification | Affinity purification |
| Conjugation | Unconjugated |
| Formulation | PBS with 0.02% sodium azide, 50% glycerol, pH7.3. |

Applications Recommended Dilution

| | |
|-----------|--------------|
| WB | 1:500-1:2000 |
|-----------|--------------|

Data



Western blot analysis of extracts of various cell lines using TAL1 Polyclonal Antibody at dilution of 1:3000.

Observed Mw:50kDa

Calculated Mw:16kDa/31kDa/34kDa

Preparation & Storage

Storage Store at -20°C. Avoid freeze / thaw cycles.

Background

TAL1 (TAL BHLH Transcription Factor 1, Erythroid Differentiation Factor) is a Protein Coding gene. Diseases associated with TAL1 include Leukemia, Acute Lymphoblastic and T-Cell Acute Lymphocytic Leukemia-1. Among its related pathways are NF-kappaB Signaling and MAPK-Erk Pathway. GO annotations related to this gene include transcription factor activity, sequence-specific DNA binding and chromatin binding. An important paralog of this gene is LYL1.

For Research Use Only

A Reliable Research Partner in Life Science and Medicine

Toll-free: 1-888-852-8623

Web: www.elabscience.com

Tel: 1-832-243-6086

Email: techsupport@elabscience.com

Fax: 1-832-243-6017