

## MST1 Polyclonal Antibody

Catalog No. E-AB-64403

**Note:** Centrifuge before opening to ensure complete recovery of vial contents.

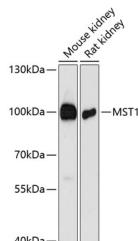
### Description

<b>Reactivity</b>	Human, Mouse, Rat
<b>Immunogen</b>	Recombinant fusion protein of human MST1 (NP_066278.3).
<b>Host</b>	Rabbit
<b>Isotype</b>	IgG
<b>Purification</b>	Affinity purification
<b>Conjugation</b>	Unconjugated
<b>Buffer</b>	PBS with 0.02% sodium azide, 50% glycerol, pH7.3.

### Applications Recommended Dilution

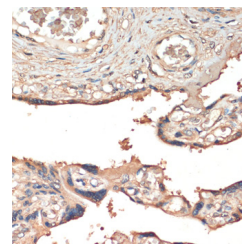
<b>WB</b>	1:500-1:2000
<b>IHC</b>	1:50-1:200
<b>IF</b>	1:50-1:200

### Data

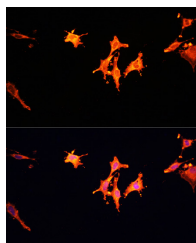


Western blot analysis of extracts of various cell lines using MST1 Polyclonal Antibody at dilution of 1:3000.

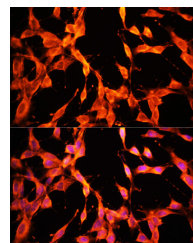
**Observed Mw:100kDa**  
**Calculated Mw:80kDa**



Immunohistochemistry of paraffin-embedded Human placenta using MST1 Polyclonal Antibody at dilution of 1:200 (40x lens).



Immunofluorescence analysis of C6 cells using MST1 Polyclonal Antibody at dilution of 1:100.  
Blue: DAPI for nuclear staining.



Immunofluorescence analysis of NIH/3T3 cells using MST1 Polyclonal Antibody at dilution of 1:100.  
Blue: DAPI for nuclear staining.

### For Research Use Only

## Preparation & Storage

**Storage**                      Store at -20°C. Avoid freeze / thaw cycles.

## Background

The protein encoded by this gene contains four kringle domains and a serine protease domain, similar to that found in hepatic growth factor. Despite the presence of the serine protease domain, the encoded protein may not have any proteolytic activity. The receptor for this protein is RON tyrosine kinase, which upon activation stimulates ciliary motility of ciliated epithelial lung cells. This protein is secreted and cleaved to form an alpha chain and a beta chain bridged by disulfide bonds.