

GBP2 Polyclonal Antibody

Catalog No. E-AB-64408

Note: Centrifuge before opening to ensure complete recovery of vial contents.

Description

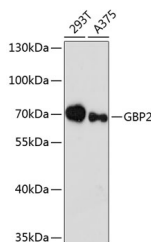
Reactivity	Human
Immunogen	Recombinant fusion protein of human GBP2 (NP_004111.2).
Host	Rabbit
Isotype	IgG
Purification	Affinity purification
Conjugation	Unconjugated
Buffer	PBS with 0.02% sodium azide, 50% glycerol, pH7.3.

Applications

Recommended Dilution

WB 1:500-1:2000

Data



Western blot analysis of extracts of various cell lines using GBP2 Polyclonal Antibody at dilution of 1:3000.

Observed Mw:67kDa/70kDa

Calculated Mw:67kDa

Preparation & Storage

Storage Store at -20°C. Avoid freeze / thaw cycles.

Background

This gene belongs to the guanine-binding protein (GBP) family, which includes interferon-induced proteins that can bind to guanine nucleotides (GMP, GDP and GTP). The encoded protein is a GTPase which hydrolyzes GTP, predominantly to GDP. The protein may play a role as a marker of squamous cell carcinomas.

For Research Use Only