

CD40L Polyclonal Antibody

Catalog No. E-AB-64411

Note: Centrifuge before opening to ensure complete recovery of vial contents.

Description

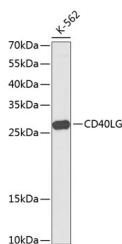
Reactivity	Human, Mouse, Rat
Immunogen	A synthetic peptide of human CD40L (NP_000065.1).
Host	Rabbit
Isotype	IgG
Purification	Affinity purification
Conjugation	Unconjugated
Buffer	PBS with 0.02% sodium azide, 50% glycerol, pH7.3.

Applications

Recommended Dilution

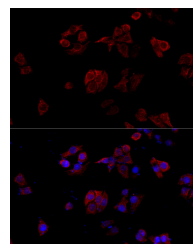
WB	1:1000-1:2000
IF	1:50-1:200

Data

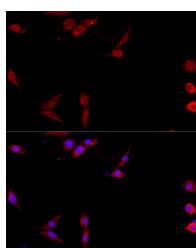


Western blot analysis of extracts of K561 cells using CD40L Polyclonal Antibody at dilution of 1:1000.

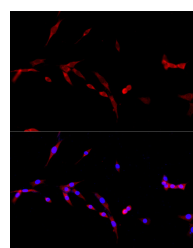
Observed Mw:29kDa
Calculated Mw:29kDa



Immunofluorescence analysis of HeLa cells using CD40L Polyclonal Antibody at dilution of 1:100.
Blue: DAPI for nuclear staining.



Immunofluorescence analysis of NIH/3T3 cells using CD40L Polyclonal Antibody at dilution of 1:100.
Blue: DAPI for nuclear staining.



Immunofluorescence analysis of PC-12 cells using CD40L Polyclonal Antibody at dilution of 1:100.
Blue: DAPI for nuclear staining.

Preparation & Storage

Storage Store at -20°C. Avoid freeze / thaw cycles.

For Research Use Only

Background

The protein encoded by this gene is expressed on the surface of T cells. It regulates B cell function by engaging CD40 on the B cell surface. A defect in this gene results in an inability to undergo immunoglobulin class switch and is associated with hyper-IgM syndrome.