

## CSNK1G3 Polyclonal Antibody

**Catalog No.** E-AB-64415

*Note:* Centrifuge before opening to ensure complete recovery of vial contents.

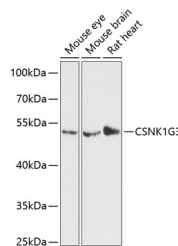
### Description

|                     |   |
|---------------------|---|
| <b>Reactivity</b>   | Mouse,Rat   |
| <b>Immunogen</b>    | Recombinant fusion protein of human CSNK1G3 (NP_001026982.1). |
| <b>Host</b>         | Rabbit  |
| <b>Isotype</b>      | IgG   |
| <b>Purification</b> | Affinity purification   |
| <b>Conjugation</b>  | Unconjugated  |
| <b>Buffer</b>       | PBS with 0.02% sodium azide, 50% glycerol, pH7.3.             |

### Applications Recommended Dilution

**WB** 1:500-1:2000

### Data



Western blot analysis of extracts of various cell lines using CSNK1G3 Polyclonal Antibody at dilution of 1:3000.

**Observed Mw:51kDa**

**Calculated**

**Mw:36kDa/40kDa/48kDa/49kDa/51kDa/52kDa**

### Preparation & Storage

**Storage** Store at -20°C. Avoid freeze / thaw cycles.

### Background

This gene encodes a member of a family of serine/threonine protein kinases that phosphorylate caseins and other acidic proteins. A related protein in the African clawed frog participates in the transmission of Wnt/beta-catenin signaling. Alternatively spliced transcript variants encoding multiple isoforms have been observed for this gene.

### For Research Use Only