

(KO Validated) GCN1L1 Polyclonal Antibody

Catalog Number:E-AB-64442



Note: Centrifuge before opening to ensure complete recovery of vial contents.

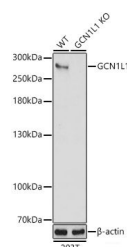
Description

Reactivity	Human
Immunogen	Recombinant fusion protein of human GCN1L1
Host	Rabbit
Isotype	IgG
Purification	Affinity purification
Conjugation	Unconjugated
Formulation	PBS with 0.01% thiomersal, 50% glycerol, pH 7.3.

Applications Recommended Dilution

WB	1:500-1:2000
-----------	--------------

Data



Western blot analysis of extracts from wild type (WT) and GCN1L1 knockout (KO) 293T (KO) cells using GCN1L1 Polyclonal Antibody at 1:3000 dilution.

Observed Mw: 293 kDa

Calculated Mw: 292 kDa

Preparation & Storage

Storage Store at -20°C. Avoid freeze / thaw cycles.

Background

Acts as a positive activator of the EIF2AK4/GCN2 protein kinase activity in response to amino acid starvation. Forms a complex with EIF2AK4/GCN2 on translating ribosomes; during this process, GCN1 seems to act as a chaperone to facilitate delivery of uncharged tRNAs that enter the A site of ribosomes to the tRNA-binding domain of EIF2AK4/GCN2, and hence stimulating EIF2AK4/GCN2 kinase activity. Participates in the repression of global protein synthesis and in gene-specific mRNA translation activation, such as the transcriptional activator ATF4, by promoting the EIF2AK4/GCN2-mediated phosphorylation of eukaryotic translation initiation factor 2 (eIF-2- α /EIF2S1 on 'Ser-52', and hence allowing ATF4-mediated reprogramming of amino acid biosynthetic gene expression to alleviate nutrient depletion.

For Research Use Only

A Reliable Research Partner in Life Science and Medicine

Toll-free: 1-888-852-8623

Web: www.elabscience.com

Tel: 1-832-243-6086

Email: techsupport@elabscience.com

Fax: 1-832-243-6017