

RRP12 Polyclonal Antibody

Catalog No. E-AB-64443

Note: Centrifuge before opening to ensure complete recovery of vial contents.

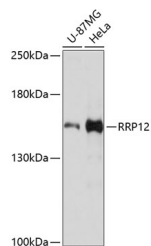
Description

| | |
|---------------------|--|
| Reactivity | Human |
| Immunogen | Recombinant fusion protein of human RRP12 (NP_055994.2). |
| Host | Rabbit |
| Isotype | IgG |
| Purification | Affinity purification |
| Conjugation | Unconjugated |
| Buffer | PBS with 0.02% sodium azide, 50% glycerol, pH7.3. |

Applications Recommended Dilution

WB 1:500-1:2000

Data



Western blot analysis of extracts of various cell lines using RRP12 Polyclonal Antibody at dilution of 1:3000.

Observed Mw:144kDa

Calculated Mw:132kDa/137kDa/143kDa

Preparation & Storage

Storage Store at -20°C. Avoid freeze / thaw cycles.

Background

RRP12 (Ribosomal RNA Processing 12 Homolog) is a Protein Coding gene. Gene Ontology (GO) annotations related to this gene include binding.

For Research Use Only