

# NUP160 Polyclonal Antibody

Catalog Number:E-AB-64444



**Note:** Centrifuge before opening to ensure complete recovery of vial contents.

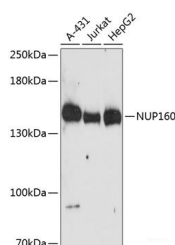
## Description

|                     |   |
|---------------------|---|
| <b>Reactivity</b>   | Human   |
| <b>Immunogen</b>    | Recombinant fusion protein of human NUP160 (NP_056046.1). |
| <b>Host</b>         | Rabbit  |
| <b>Isotype</b>      | IgG   |
| <b>Purification</b> | Affinity purification                                     |
| <b>Conjugation</b>  | Unconjugated  |
| <b>Formulation</b>  | PBS with 0.02% sodium azide, 50% glycerol, pH7.3.         |

## Applications Recommended Dilution

|           |              |
|-----------|--------------|
| <b>WB</b> | 1:500-1:2000 |
|-----------|--------------|

## Data



Western blot analysis of extracts of various cell lines using NUP160 Polyclonal Antibody at dilution of 1:3000.

**Observed Mw:150kDa**

**Calculated Mw:24kDa/55kDa/162kDa**

## Preparation & Storage

|                |   |
|----------------|---|
| <b>Storage</b> | Store at -20°C. Avoid freeze / thaw cycles. |
|----------------|---|

## Background

NUP160 (Nucleoporin 160) is a Protein Coding gene. Diseases associated with NUP160 include Nephrotic Syndrome, Type 19 and Genetic Steroid-Resistant Nephrotic Syndrome. Among its related pathways are Transport of the SLBP independent Mature mRNA and Signaling by GPCR.

## For Research Use Only

A Reliable Research Partner in Life Science and Medicine

Toll-free: 1-888-852-8623

Web: [www.elabscience.com](http://www.elabscience.com)

Tel: 1-832-243-6086

Email: [techsupport@elabscience.com](mailto:techsupport@elabscience.com)

Fax: 1-832-243-6017