

## PPME1 Polyclonal Antibody

**Catalog No.** E-AB-64450

*Note:* Centrifuge before opening to ensure complete recovery of vial contents.

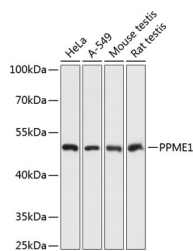
### Description

<b>Reactivity</b>	Human, Mouse, Rat
<b>Immunogen</b>	Recombinant fusion protein of human PPME1 (NP_057231.1).
<b>Host</b>	Rabbit
<b>Isotype</b>	IgG
<b>Purification</b>	Affinity purification
<b>Conjugation</b>	Unconjugated
<b>Buffer</b>	PBS with 0.02% sodium azide, 50% glycerol, pH7.3.

### Applications Recommended Dilution

**WB** 1:500-1:2000

### Data



Western blot analysis of extracts of various cell lines using PPME1 Polyclonal Antibody at dilution of 1:3000.

**Observed Mw:42kDa**

**Calculated Mw:18kDa/22kDa/42kDa/43kDa**

### Preparation & Storage

**Storage** Store at -20°C. Avoid freeze / thaw cycles.

### Background

This gene encodes a protein phosphatase methylesterase localized to the nucleus. The encoded protein acts on the protein phosphatase-2A catalytic subunit and supports the ERK pathway through dephosphorylation of regulatory proteins. It plays a role in malignant glioma progression. Alternative splicing results in multiple transcript variants.

### For Research Use Only