

GKN1 Polyclonal Antibody

Catalog No. E-AB-64458

Note: Centrifuge before opening to ensure complete recovery of vial contents.

Description

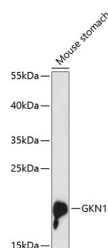
Reactivity	Human, Mouse
Immunogen	Recombinant fusion protein of human GKN1 (NP_062563.3).
Host	Rabbit
Isotype	IgG
Purification	Affinity purification
Conjugation	Unconjugated
Buffer	PBS with 0.02% sodium azide, 50% glycerol, pH7.3.

Applications

Recommended Dilution

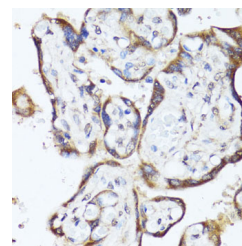
WB	1:500-1:2000
IHC	1:50-1:200

Data

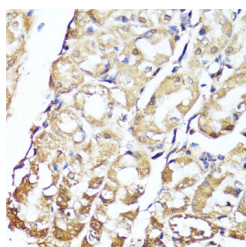


Western blot analysis of extracts of Mouse stomach using GKN1 Polyclonal Antibody at dilution of 1:3000.

Observed Mw:22kDa
Calculated Mw:21kDa



Immunohistochemistry of paraffin-embedded Human placenta using GKN1 Polyclonal Antibody at dilution of 1:150 (40x lens).



Immunohistochemistry of paraffin-embedded Human stomach using GKN1 Polyclonal Antibody at dilution of 1:150 (40x lens).

Preparation & Storage

For Research Use Only

Storage Store at -20°C. Avoid freeze / thaw cycles.

Background

The protein encoded by this gene is found to be down-regulated in human gastric cancer tissue as compared to normal gastric mucosa.