

## NUP107 Polyclonal Antibody

**Catalog No.** E-AB-64460

*Note:* Centrifuge before opening to ensure complete recovery of vial contents.

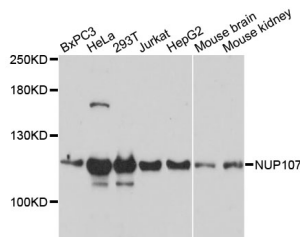
### Description

<b>Reactivity</b>	Human, Mouse
<b>Immunogen</b>	Recombinant Protein of human NUP107
<b>Host</b>	Rabbit
<b>Isotype</b>	IgG
<b>Purification</b>	Affinity purification
<b>Conjugation</b>	Unconjugated
<b>Buffer</b>	PBS with 0.02% sodium azide and 50% glycerol pH 7.4.

### Applications Recommended Dilution

**WB** 1:500-1:2000

### Data



Western blot analysis of extracts of various cell lines with NUP107 Polyclonal Antibody

**Observed Mw: 115kDa**

**Calculated Mw: 79kDa/103kDa/106kDa**

### Preparation & Storage

**Storage** Store at -20°C. Avoid freeze / thaw cycles.

### Background

This gene encodes a member of the nucleoporin family. The protein is localized to the nuclear rim and is an essential component of the nuclear pore complex (NPC). All molecules entering or leaving the nucleus either diffuse through or are actively transported by the NPC. Alternate transcriptional splice variants of this gene have been observed but have not been thoroughly characterized.

### For Research Use Only