

LRRC7 Polyclonal Antibody

Catalog Number:E-AB-64461

Note: Centrifuge before opening to ensure complete recovery of vial contents.

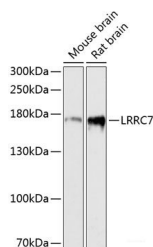
Description

Reactivity	Human,Mouse,Rat
Immunogen	Recombinant fusion protein of human LRRC7 (NP_065845.1).
Host	Rabbit
Isotype	IgG
Purification	Affinity purification
Conjugation	Unconjugated
Formulation	PBS with 0.02% sodium azide, 50% glycerol, pH7.3.

Applications Recommended Dilution

WB	1:500-1:2000
IF	1:50-1:200

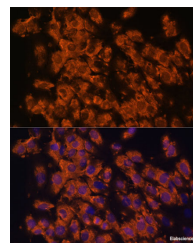
Data



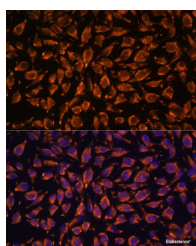
Western blot analysis of extracts of various cell lines using LRRC7 Polyclonal Antibody at dilution of 1:3000.

Observed Mw:172kDa

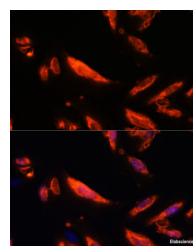
Calculated Mw:20kDa/167kDa/172kDa



Immunofluorescence analysis of C6 cells using LRRC7 Polyclonal Antibody at dilution of 1:100. Blue: DAPI for nuclear staining.



Immunofluorescence analysis of L929 cells using LRRC7 Polyclonal Antibody at dilution of 1:100. Blue: DAPI for nuclear staining.



Immunofluorescence analysis of U-2 OS cells using LRRC7 Polyclonal Antibody at dilution of 1:100. Blue: DAPI for nuclear staining.

Preparation & Storage

Storage Store at -20°C. Avoid freeze / thaw cycles.

Background

LRRC7 (Leucine Rich Repeat Containing 7) is a Protein Coding gene. Diseases associated with LRRC7 include Dental Pulp Necrosis and Chromosome 3Q29 Deletion Syndrome. Among its related pathways are Innate Immune System. An

For Research Use Only

A Reliable Research Partner in Life Science and Medicine

Toll-free: 1-888-852-8623

Web: www.elabscience.com

Tel: 1-832-243-6086

Email: techsupport@elabscience.com

Fax: 1-832-243-6017

LRRC7 Polyclonal Antibody

Catalog Number:E-AB-64461



important paralog of this gene is ERBIN.

For Research Use Only

A Reliable Research Partner in Life Science and Medicine

Toll-free: 1-888-852-8623

Web: www.elabscience.com

Tel: 1-832-243-6086

Email: techsupport@elabscience.com

Fax: 1-832-243-6017