

CWC22 Polyclonal Antibody

Catalog Number:E-AB-64462



Note: Centrifuge before opening to ensure complete recovery of vial contents.

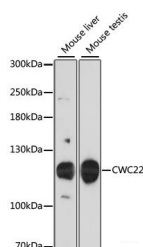
Description

Reactivity	Mouse
Immunogen	Recombinant fusion protein of human CWC22 (NP_065994.1).
Host	Rabbit
Isotype	IgG
Purification	Affinity purification
Conjugation	Unconjugated
Formulation	PBS with 0.02% sodium azide, 50% glycerol, pH7.3.

Applications Recommended Dilution

WB	1:1000-1:2000
-----------	---------------

Data



Western blot analysis of extracts of various cell lines using CWC22 Polyclonal Antibody at dilution of 1:3000.

Observed Mw:110kDa
Calculated Mw:105kDa

Preparation & Storage

Storage Store at -20°C. Avoid freeze / thaw cycles.

Background

CWC22 (CWC22 Spliceosome Associated Protein Homolog) is a Protein Coding gene. Diseases associated with CWC22 include Hard Palate Cancer and Bruxism. Among its related pathways are Gene Expression and mRNA Splicing - Major Pathway. Gene Ontology (GO) annotations related to this gene include RNA binding and binding. An important paralog of this gene is NOM1.

For Research Use Only

A Reliable Research Partner in Life Science and Medicine

Toll-free: 1-888-852-8623

Web: www.elabscience.com

Tel: 1-832-243-6086

Email: techsupport@elabscience.com

Fax: 1-832-243-6017