

## RBM26 Polyclonal Antibody

**Catalog No.** E-AB-64465

*Note:* Centrifuge before opening to ensure complete recovery of vial contents.

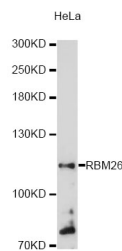
### Description

<b>Reactivity</b>	Human
<b>Immunogen</b>	Recombinant protein of human RBM26
<b>Host</b>	Rabbit
<b>Isotype</b>	IgG
<b>Purification</b>	Affinity purification
<b>Conjugation</b>	Unconjugated
<b>Buffer</b>	PBS with 0.02% sodium azide and 50% glycerol pH 7.4.

### Applications Recommended Dilution

**WB** 1:1000-1:2000

### Data



Western blot analysis of extracts of HeLa cells with  
RBM26 Polyclonal Antibody

**Observed Mw:113kDa**

**Calculated**

**Mw:13kDa/60kDa/62kDa/110kDa/111kDa/113kDa**

### Preparation & Storage

**Storage** Store at -20°C. Avoid freeze / thaw cycles.

### For Research Use Only