

RBM26 Polyclonal Antibody

Catalog No. E-AB-64466

Note: Centrifuge before opening to ensure complete recovery of vial contents.

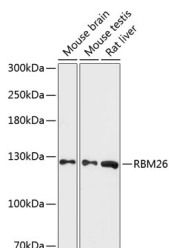
Description

Reactivity	Mouse,Rat
Immunogen	Recombinant fusion protein of human RBM26 (NP_071401.3).
Host	Rabbit
Isotype	IgG
Purification	Affinity purification
Conjugation	Unconjugated
Buffer	PBS with 0.02% sodium azide, 50% glycerol, pH7.3.

Applications Recommended Dilution

WB 1:500-1:2000

Data



Western blot analysis of extracts of various cell lines using RBM26 Polyclonal Antibody at dilution of 1:3000.

Observed Mw:113kDa

Calculated

Mw:13kDa/60kDa/62kDa/110kDa/111kDa/113kDa

Preparation & Storage

Storage Store at -20°C. Avoid freeze / thaw cycles.

Background

RBM26 (RNA binding motif protein 26) bears two RNA recognition motif (RRM) domains and a C3H1-type zinc finger. The function of RBM26 has not been characterized.

For Research Use Only