

RBM26 Polyclonal Antibody

Catalog Number: E-AB-64466



Note: Centrifuge before opening to ensure complete recovery of vial contents.

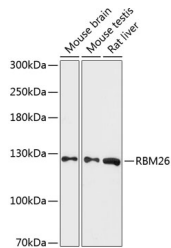
Description

Reactivity	Mouse, Rat
Immunogen	Recombinant fusion protein of human RBM26 (NP_071401.3).
Host	Rabbit
Isotype	IgG
Purification	Affinity purification
Conjugation	Unconjugated
Formulation	PBS with 0.02% sodium azide, 50% glycerol, pH7.3.

Applications Recommended Dilution

WB	1:500-1:2000
-----------	--------------

Data



Western blot analysis of extracts of various cell lines using RBM26 Polyclonal Antibody at dilution of 1:3000.

Observed Mw: 113kDa

Calculated

Mw: 13kDa/60kDa/62kDa/110kDa/111kDa/113kDa

Preparation & Storage

Storage Store at -20°C. Avoid freeze / thaw cycles.

Background

RBM26 (RNA binding motif protein 26) bears two RNA recognition motif (RRM) domains and a C3H1-type zinc finger. The function of RBM26 has not been characterized.

For Research Use Only

A Reliable Research Partner in Life Science and Medicine

Toll-free: 1-888-852-8623

Web: www.elabscience.com

Tel: 1-832-243-6086

Email: techsupport@elabscience.com

Fax: 1-832-243-6017