

## NEXN Polyclonal Antibody

**Catalog No.** E-AB-64474

**Note:** Centrifuge before opening to ensure complete recovery of vial contents.

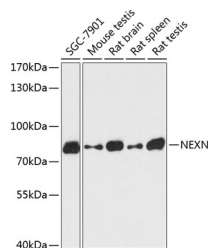
### Description

<b>Reactivity</b>	Human, Mouse, Rat
<b>Immunogen</b>	Recombinant fusion protein of human NEXN (NP_653174.3).
<b>Host</b>	Rabbit
<b>Isotype</b>	IgG
<b>Purification</b>	Affinity purification
<b>Conjugation</b>	Unconjugated
<b>Buffer</b>	PBS with 0.02% sodium azide, 50% glycerol, pH7.3.

### Applications Recommended Dilution

<b>WB</b>	1:500-1:2000
<b>IF</b>	1:50-1:200

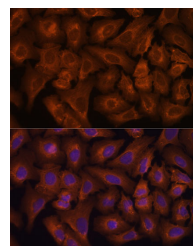
### Data



Western blot analysis of extracts of various cell lines using NEXN Polyclonal Antibody at dilution of 1:3000.

**Observed Mw:81kDa**

**Calculated Mw:72kDa/73kDa/79kDa/80kDa**



Immunofluorescence analysis of U-2 OS cells using NEXN Polyclonal Antibody at dilution of 1:100. Blue: DAPI for nuclear staining.

### Preparation & Storage

**Storage** Store at -20°C. Avoid freeze / thaw cycles.

### Background

This gene encodes a filamentous actin-binding protein that may function in cell adhesion and migration. Mutations in this gene have been associated with dilated cardiomyopathy, also known as CMD1CC. Alternatively spliced transcript variants have been described.

### For Research Use Only