

PIWIL3 Polyclonal Antibody

Catalog No. E-AB-64502

Note: Centrifuge before opening to ensure complete recovery of vial contents.

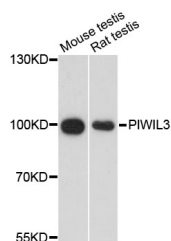
Description

Reactivity	Mouse,Rat
Immunogen	Recombinant Protein of human PIWIL3
Host	Rabbit
Isotype	IgG
Purification	Affinity purification
Conjugation	Unconjugated
Buffer	PBS with 0.02% sodium azide and 50% glycerol pH 7.4.

Applications Recommended Dilution

WB 1:500-1:2000

Data



Western blot analysis of extracts of various cell lines with PIWIL3 Polyclonal Antibody

Observed Mw:101kDa
Calculated Mw:101kDa

Preparation & Storage

Storage Store at -20°C. Avoid freeze / thaw cycles.

Background

This gene encodes a member of the PIWI subfamily of Argonaute family proteins. This subfamily of proteins contains a PAZ domain, found in proteins involved in RNA-mediated gene silencing, and a C-terminal Piwi domain. The encoded protein is thought to function in maintenance of germline cells. Multiple transcript variants encoding different isoforms have been found for this gene.

For Research Use Only