

Note: Centrifuge before opening to ensure complete recovery of vial contents.

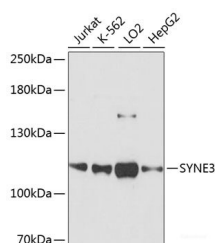
Description

Reactivity	Human
Immunogen	Recombinant fusion protein of human SYNE3 (NP_689805.3).
Host	Rabbit
Isotype	IgG
Purification	Affinity purification
Conjugation	Unconjugated
Formulation	PBS with 0.02% sodium azide, 50% glycerol, pH7.3.

Applications Recommended Dilution

WB	1:500-1:2000
-----------	--------------

Data



Western blot analysis of extracts of various cell lines using SYNE3 Polyclonal Antibody at dilution of 1:3000.

Observed Mw:112kDa

Calculated Mw:68kDa/111kDa/112kDa

Preparation & Storage

Storage Store at -20°C. Avoid freeze / thaw cycles.

Background

SYNE3 (Spectrin Repeat Containing Nuclear Envelope Family Member 3) is a Protein Coding gene. Diseases associated with SYNE3 include Spinocerebellar Ataxia, Autosomal Recessive 8 and Emery-Dreifuss Muscular Dystrophy 3, Autosomal Recessive. Gene Ontology (GO) annotations related to this gene include actin binding and actin filament binding. An important paralog of this gene is SPTBN2.

For Research Use Only

A Reliable Research Partner in Life Science and Medicine

Toll-free: 1-888-852-8623

Web: www.elabscience.com

Tel: 1-832-243-6086

Email: techsupport@elabscience.com

Fax: 1-832-243-6017