

AMY1A Polyclonal Antibody

Catalog No. E-AB-64525

Note: Centrifuge before opening to ensure complete recovery of vial contents.

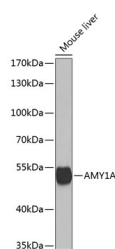
Description

| | |
|---------------------|--|
| Reactivity | Mouse |
| Immunogen | Recombinant fusion protein of human AMY1A (NP_004029.2). |
| Host | Rabbit |
| Isotype | IgG |
| Purification | Affinity purification |
| Conjugation | Unconjugated |
| Buffer | PBS with 0.02% sodium azide, 50% glycerol, pH7.3. |

Applications Recommended Dilution

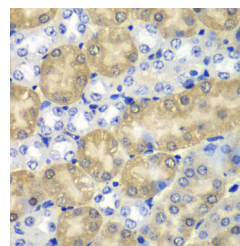
WB 1:500-1:2000 IHC
1:50-1:200

Data



Western blot analysis of extracts of Mouse liver using AMY1A Polyclonal Antibody at dilution of 1:1000.

Observed Mw:54kDa
Calculated Mw:57kDa



Immunohistochemistry of paraffin-embedded Mouse kidney using AMY1A Polyclonal Antibody at dilution of 1:100 (40x lens).

Preparation & Storage

Storage Store at -20°C. Avoid freeze / thaw cycles.

Background

Amylases are secreted proteins that hydrolyze 1,4-alpha-glucoside bonds in oligosaccharides and polysaccharides, and thus catalyze the first step in digestion of dietary starch and glycogen. The human genome has a cluster of several amylase genes that are expressed at high levels in either salivary gland or pancreas. This gene encodes an amylase isoenzyme produced by the salivary gland. Alternative splicing results in multiple transcript variants encoding the same protein.

For Research Use Only