

MLF1 Polyclonal Antibody

Catalog No. E-AB-64558

Note: Centrifuge before opening to ensure complete recovery of vial contents.

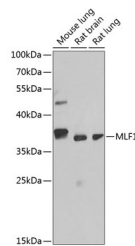
Description

Reactivity	Human,Mouse,Rat
Immunogen	Recombinant fusion protein of human MLF1 (NP_071888.1).
Host	Rabbit
Isotype	IgG
Purification	Affinity purification
Conjugation	Unconjugated
Buffer	PBS with 0.02% sodium azide, 50% glycerol, pH7.3.

Applications Recommended Dilution

WB 1:500-1:2000 IF
1:50-1:200

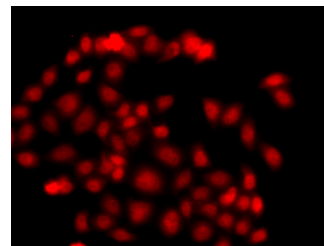
Data



Western blot analysis of extracts of various cell lines using MLF1 Polyclonal Antibody at dilution of 1:1000.

Observed Mw:38kDa
Calculated

Mw:23kDa/27kDa/29kDa/30kDa/33kDa



Immunofluorescence analysis of A549 cells using MLF1 Polyclonal Antibody

Preparation & Storage

Storage Store at -20°C. Avoid freeze / thaw cycles.

Background

This gene encodes an oncoprotein which is thought to play a role in the phenotypic determination of hemopoetic cells. Translocations between this gene and nucleophosmin have been associated with myelodysplastic syndrome and acute myeloid leukemia. Multiple transcript variants encoding different isoforms have been found for this gene.

For Research Use Only