

## SSNA1 Polyclonal Antibody

**Catalog No.** E-AB-64595

*Note:* Centrifuge before opening to ensure complete recovery of vial contents.

### Description

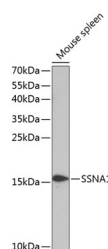
<b>Reactivity</b>	Human,Mouse,Rat
<b>Immunogen</b>	Recombinant fusion protein of human SSNA1 (NP_003722.2).
<b>Host</b>	Rabbit
<b>Isotype</b>	IgG
<b>Purification</b>	Affinity purification
<b>Conjugation</b>	Unconjugated
<b>Buffer</b>	PBS with 0.02% sodium azide, 50% glycerol, pH7.3.

### Applications

### Recommended Dilution

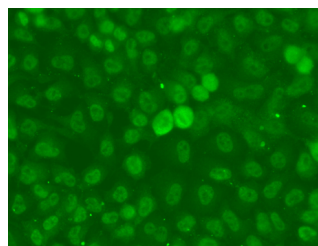
**WB 1:500-1:2000 IF**  
**1:50-1:200**

### Data



Western blot analysis of extracts of Mouse spleen using SSNA1 Polyclonal Antibody at dilution of 1:1000.

**Observed Mw:16kDa**  
**Calculated Mw:13kDa**



Immunofluorescence analysis of A549 cells using SSNA1 Polyclonal Antibody

### Preparation & Storage

**Storage** Store at -20°C. Avoid freeze / thaw cycles.

### Background

SSNA1 (SS Nuclear Autoantigen 1) is a Protein Coding gene. Diseases associated with SSNA1 include Paralytic Squint and Hypercholesterolemia, Familial, 4. Among its related pathways are Organelle biogenesis and maintenance and Regulation of PLK1 Activity at G2/M Transition. Gene Ontology (GO) annotations related to this gene include identical protein binding.

### For Research Use Only