

# Recombinant Human C-X-C Motif Chemokine 6/CXCL6 (C-6His)



Catalog Number:PKSH033901

**Note:** Centrifuge before opening to ensure complete recovery of vial contents.

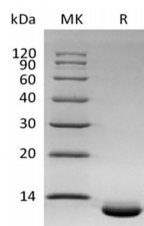
## Description

<b>Synonyms</b>	C-X-C Motif Chemokine 6;Chemokine Alpha 3;CKA-3;Granulocyte Chemotactic Protein 2;GCP-2;Small-Inducible Cytokine B6;CXCL6;GCP2;SCYB6
<b>Species</b>	Human
<b>Expression Host</b>	HEK293 Cells
<b>Sequence</b>	Gly38-Asn114
<b>Accession</b>	P80162
<b>Calculated Molecular Weight</b>	9.4 kDa
<b>Observed molecular weight</b>	13 kDa
<b>Tag</b>	C-His

## Properties

<b>Purity</b>	> 95 % as determined by reducing SDS-PAGE.
<b>Endotoxin</b>	< 1.0 EU per µg of the protein as determined by the LAL method.
<b>Storage</b>	Generally, lyophilized proteins are stable for up to 12 months when stored at -20 to -80°C. Reconstituted protein solution can be stored at 4-8°C for 2-7 days. Aliquots of reconstituted samples are stable at < -20°C for 3 months.
<b>Shipping</b>	This product is provided as lyophilized powder which is shipped with ice packs.
<b>Formulation</b>	Lyophilized from a 0.2 µm filtered solution of 20mM PB, 150mM NaCl, 5% Trehalose, 1mM EDTA, pH 7.4. Normally 5 % - 8 % trehalose, mannitol and 0.01% Tween80 are added as protectants before lyophilization. Please refer to the specific buffer inform
<b>Reconstitution</b>	Please refer to the printed manual for detailed information.

## Data



> 95 % as determined by reducing SDS-PAGE.

## Background

Chemokine (C-X-C-Motif) Ligand 6 (CXCL6) is a small cytokine belonging to the CXC chemokine family. It is a potent neutrophil chemotactic and activating factor and it exhibits extensive similarity to other CXC chemokines such as IL-8 and ENA-78. CXCL6 can promote the release of MMP-9 from granulocytes indicating its potential role as an inflammatory mediator. It functionally uses both of the IL-8/CXCL8 receptors to chemoattract neutrophils but that is structurally most related to epithelial cell-derived neutrophil attractant-78 (ENA-78)/CXCL5. The human CXCL6 gene has been cloned and is physically mapped to the CXC chemokine locus on chromosome 4. Mature human CXCL6 is a 75

## For Research Use Only

A Reliable Research Partner in Life Science and Medicine

Toll-free: 1-888-852-8623

Web: [www.elabscience.com](http://www.elabscience.com)

Tel: 1-832-243-6086

Email: [techsupport@elabscience.com](mailto:techsupport@elabscience.com)

Fax: 1-832-243-6017

# Recombinant Human C-X-C Motif Chemokine 6/CXCL6 (C-6His)



Catalog Number:PKSH033901

---

amino acid (aa) protein with a predicted molecular weight of approximately 8 kDa. Human CXCL6 shares 60% and 67% aa identity with mouse and bovine CXCL6, respectively.

---

## For Research Use Only

A Reliable Research Partner in Life Science and Medicine

Toll-free: 1-888-852-8623

Tel: 1-832-243-6086

Fax: 1-832-243-6017

Web: [www.elabscience.com](http://www.elabscience.com)

Email: [techsupport@elabscience.com](mailto:techsupport@elabscience.com)