

SEPHS1 Polyclonal Antibody

Catalog No. E-AB-64614

Note: Centrifuge before opening to ensure complete recovery of vial contents.

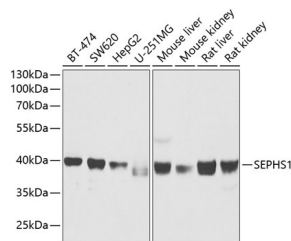
Description

Reactivity	Human, Mouse, Rat
Immunogen	Recombinant fusion protein of human SEPHS1 (NP_036379.2).
Host	Rabbit
Isotype	IgG
Purification	Affinity purification
Conjugation	Unconjugated
Buffer	PBS with 0.02% sodium azide, 50% glycerol, pH7.3.

Applications Recommended Dilution

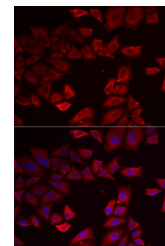
WB 1:500-1:2000 IF
1:50-1:200

Data



Western blot analysis of extracts of various cell lines using SEPHS1 Polyclonal Antibody at dilution of 1:1000.

Observed Mw:40kDa
Calculated Mw:35kDa/42kDa



Immunofluorescence analysis of MCF7 cells using SEPHS1 Polyclonal Antibody

Preparation & Storage

Storage Store at -20°C. Avoid freeze / thaw cycles.

Background

This gene encodes an enzyme that synthesizes selenophosphate from selenide and ATP. Selenophosphate is the selenium donor used to synthesize selenocysteine, which is co-translationally incorporated into selenoproteins at in-frame UGA codons.

For Research Use Only