

# Recombinant Human Siglec-8 (C-Fc)

Catalog Number:PKSH033950



**Note:** Centrifuge before opening to ensure complete recovery of vial contents.

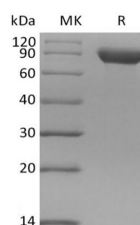
## Description

<b>Synonyms</b>	Siglec8;Siglec-8;SAF2;SAF2SAF-2;SAF-2;CD329 antigen;CDw329
<b>Species</b>	Human
<b>Expression Host</b>	HEK293 Cells
<b>Sequence</b>	Met17-Ala363
<b>Accession</b>	Q9NYZ4
<b>Calculated Molecular Weight</b>	64.7 kDa
<b>Observed molecular weight</b>	80-100 kDa
<b>Tag</b>	C-Fc

## Properties

<b>Purity</b>	> 95 % as determined by reducing SDS-PAGE.
<b>Endotoxin</b>	< 1.0 EU per µg of the protein as determined by the LAL method.
<b>Storage</b>	Generally, lyophilized proteins are stable for up to 12 months when stored at -20 to -80°C. Reconstituted protein solution can be stored at 4-8°C for 2-7 days. Aliquots of reconstituted samples are stable at < -20°C for 3 months.
<b>Shipping</b>	This product is provided as lyophilized powder which is shipped with ice packs.
<b>Formulation</b>	Lyophilized from a 0.2 µm filtered solution of PBS, pH 7.4. Normally 5 % - 8 % trehalose, mannitol and 0.01% Tween80 are added as protectants before lyophilization. Please refer to the specific buffer information in the printed manual.
<b>Reconstitution</b>	Please refer to the printed manual for detailed information.

## Data



> 95 % as determined by reducing SDS-PAGE.

## Background

Siglec-8 is also known as SIGLEC8, SAF2, SIGLEC-8, SIGLEC8L and sialic acid binding Ig like lectin 8, is an approximately 75 kDa transmembrane glycoprotein in the Siglec family of sialic acid-binding immune regulatory molecules. Siglec-8 is expressed on eosinophils, basophils, and mast cells, and it shows a binding preference for the carbohydrate 6-O sulfated sLex. At the tissue level, Siglec-8 mRNA was found to be most highly expressed in lung, PBMCs, spleen, and kidney. Mature human Siglec-8 consists of a 347 amino acid (aa) extracellular domain (ECD) with three Ig-like domains, a 21 aa transmembrane segment, and a 115 aa cytoplasmic domain with two tyrosine based signaling motifs. Alternative splicing generates additional isoforms that either lack most of the second Ig-like domain or have a substituted cytoplasmic domain without the signaling motifs. Cross-linking of Siglec-8 inhibits Fc epsilon RI alpha

## For Research Use Only

A Reliable Research Partner in Life Science and Medicine

Toll-free: 1-888-852-8623

Web: [www.elabscience.com](http://www.elabscience.com)

Tel: 1-832-243-6086

Email: [techsupport@elabscience.com](mailto:techsupport@elabscience.com)

Fax: 1-832-243-6017

# Recombinant Human Siglec-8 (C-Fc)

Catalog Number:PKSH033950



induced mast cell degranulation (9). It also induces eosinophil apoptosis, an effect which is enhanced by the eosinophil-activating cytokines IL-5, IL-33, and GM-CSF.

---

## For Research Use Only

A Reliable Research Partner in Life Science and Medicine

Toll-free: 1-888-852-8623

Tel: 1-832-243-6086

Fax: 1-832-243-6017

Web: [www.elabscience.com](http://www.elabscience.com)

Email: [techsupport@elabscience.com](mailto:techsupport@elabscience.com)