

# Recombinant Human IL-6 Receptor Subunit alpha/IL-6RA/CD126 (C-Avi-6His) Biotinylated



Catalog Number:PKSH033953

**Note:** Centrifuge before opening to ensure complete recovery of vial contents.

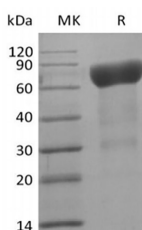
## Description

<b>Synonyms</b>	Interleukin-6 receptor subunit alpha;IL-6R subunit alpha;IL-6R-alpha;IL-6R 1;Membrane glycoprotein 80;gp80;CD126
<b>Species</b>	Human
<b>Expression Host</b>	HEK293 Cells
<b>Sequence</b>	Leu20-Pro365
<b>Accession</b>	P08887
<b>Calculated Molecular Weight</b>	41.2 kDa
<b>Observed molecular weight</b>	65-85 kDa
<b>Tag</b>	C-Avi-His

## Properties

<b>Purity</b>	> 95 % as determined by reducing SDS-PAGE.
<b>Endotoxin</b>	< 1.0 EU per µg of the protein as determined by the LAL method.
<b>Storage</b>	Generally, lyophilized proteins are stable for up to 12 months when stored at -20 to -80°C. Reconstituted protein solution can be stored at 4-8°C for 2-7 days. Aliquots of reconstituted samples are stable at < -20°C for 3 months.
<b>Shipping</b>	This product is provided as lyophilized powder which is shipped with ice packs.
<b>Formulation</b>	Lyophilized from a 0.2 µm filtered solution of PBS, pH 7.4. Normally 5 % - 8 % trehalose, mannitol and 0.01 % Tween80 are added as protectants before lyophilization. Please refer to the specific buffer information in the printed manual.
<b>Reconstitution</b>	Please refer to the printed manual for detailed information.

## Data



> 95 % as determined by reducing SDS-PAGE.

## Background

Interleukin 6 is a potent pleiotropic cytokine that regulates cell growth and differentiation and plays an important role in the immune response. IL6Ra is a part of the receptor for interleukin 6 cytokine. IL6Ra binds to IL6 with low affinity, but does not transduce a signal. Signal activation necessitates an association with IL6ST. Activation may lead to the regulation of the immune response, acute-phase reactions and hematopoiesis. Low concentration of a soluble form of IL6 receptor acts as an agonist of IL6 activity. Dysregulated production of IL6 and this receptor are implicated in the pathogenesis of many diseases, such as multiple myeloma, autoimmune diseases and prostate cancer.

## For Research Use Only

A Reliable Research Partner in Life Science and Medicine

Toll-free: 1-888-852-8623

Web: [www.elabscience.com](http://www.elabscience.com)

Tel: 1-832-243-6086

Email: [techsupport@elabscience.com](mailto:techsupport@elabscience.com)

Fax: 1-832-243-6017