

Recombinant Human B-cell Receptor CD22/Siglec-2/CD22 (C-6His) Biotinylated



Catalog Number:PKSH033956

Note: Centrifuge before opening to ensure complete recovery of vial contents.

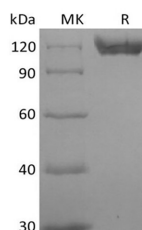
Description

Synonyms	B-cell receptor CD22;BL-CAM;B-lymphocyte cell adhesion molecule;CD22 antigenMGC130020;CD22 molecule;CD22;sialic acid binding Ig-like lectin 2;Siglec-2;SIGLEC2FLJ22814;T-cell surface antigen Leu-14
Species	Human
Expression Host	HEK293 Cells
Sequence	Asp20-Arg687
Accession	P20273
Calculated Molecular Weight	78.0 kDa
Observed molecular weight	110-130 kDa
Tag	C-His-Avi
Bioactivity	Loaded Biotinylated Human Siglec-2-His-Avi on HIS1K Biosensor, can bind Anti-Human Siglec-2 mAb-Fc with an affinity constant of 0.16 nM as determined in BLI assay.

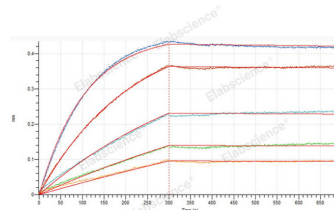
Properties

Purity	> 95 % as determined by reducing SDS-PAGE.
Endotoxin	< 1.0 EU per µg of the protein as determined by the LAL method.
Storage	Generally, lyophilized proteins are stable for up to 12 months when stored at -20 to -80°C. Reconstituted protein solution can be stored at 4-8°C for 2-7 days. Aliquots of reconstituted samples are stable at < -20°C for 3 months.
Shipping	This product is provided as lyophilized powder which is shipped with ice packs.
Formulation	Lyophilized from a 0.2 µm filtered solution of PBS, pH 7.4. Normally 5 % - 8 % trehalose, mannitol and 0.01% Tween80 are added as protectants before lyophilization. Please refer to the specific buffer information in the printed manual.
Reconstitution	Please refer to the printed manual for detailed information.

Data



> 95 % as determined by reducing SDS-PAGE.



Loaded Biotinylated Human Siglec-2-His-Avi on HIS1K Biosensor, can bind Anti-Human Siglec-2 mAb-Fc with an affinity constant of 0.16 nM as determined in BLI assay.

Background

For Research Use Only

A Reliable Research Partner in Life Science and Medicine

Toll-free: 1-888-852-8623

Web: www.elabscience.com

Tel: 1-832-243-6086

Email: techsupport@elabscience.com

Fax: 1-832-243-6017

Recombinant Human B-cell Receptor CD22/Siglec-2/CD22 (C-6His) Biotinylated



Catalog Number:PKSH033956

Siglecs (sialic acid binding Ig-like lectins) are I-type (Ig-type) lectins belonging to the Ig superfamily. They are characterized by an N-terminal Ig-like V-type domain which mediates sialic acid binding, followed by varying numbers of Ig-like C2-type domains. Human Siglec-2, also known as B-cell antigen CD22 or B-lymphocyte cell adhesion molecule (BL-CAM), is a B-cell restricted glycoprotein that is expressed in the cytoplasm of progenitor B and pre-B cells and on the surface of mature B cells. Two distinct human Siglec-2/CD22 cDNAs that arise from differential RNA processing of the same gene have been isolated. Siglec-2/CD22 is an adhesion molecule that preferentially binds alpha 2,6- linked sialic acid on the same (cis) or adjacent (trans) cells. Interaction of CD22 with trans ligands on opposing cells was found to be favored over the binding of ligands in cis.

For Research Use Only

A Reliable Research Partner in Life Science and Medicine

Toll-free: 1-888-852-8623

Tel: 1-832-243-6086

Fax: 1-832-243-6017

Web: www.elabscience.com

Email: techsupport@elabscience.com