

# Recombinant Human Signal Transducer CD24/CD24 (C-Fc)

cdg

**DIA • AN**<sup>®</sup>  
by Elabscience

Catalog Number:PKSH033968

**Note:** Centrifuge before opening to ensure complete recovery of vial contents.

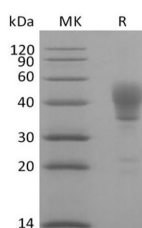
## Description

<b>Synonyms</b>	Signal transducer CD24;Small cell lung carcinoma cluster 4 antigen;CD24;CD24A
<b>Species</b>	Human
<b>Expression Host</b>	HEK293 Cells
<b>Sequence</b>	Ser27-Gly 59
<b>Accession</b>	P25063
<b>Calculated Molecular Weight</b>	29.8 kDa
<b>Observed molecular weight</b>	33-50 kDa
<b>Tag</b>	C-Fc
<b>Bioactivity</b>	Immobilized Anti-Human CD24 mAb at 2 $\mu$ g/ml (100 $\mu$ l/well) can bind Human CD24-Fc: Biotinylated by NHS-biotin prior to testing. The ED50 of Human CD24-Fc is 7.62 ng/ml.

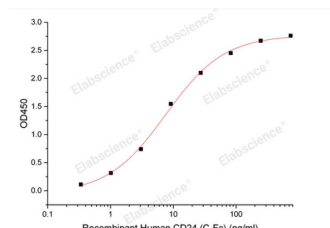
## Properties

<b>Purity</b>	> 95 % as determined by reducing SDS-PAGE.
<b>Endotoxin</b>	< 1.0 EU per $\mu$ g of the protein as determined by the LAL method.
<b>Storage</b>	Generally, lyophilized proteins are stable for up to 12 months when stored at -20 to -80°C. Reconstituted protein solution can be stored at 4-8°C for 2-7 days. Aliquots of reconstituted samples are stable at < -20°C for 3 months.
<b>Shipping</b>	This product is provided as lyophilized powder which is shipped with ice packs.
<b>Formulation</b>	Lyophilized from a 0.2 $\mu$ m filtered solution of PBS, pH 7.4. Normally 5 % - 8 % trehalose, mannitol and 0.01% Tween80 are added as protectants before lyophilization. Please refer to the specific buffer information in the printed manual.
<b>Reconstitution</b>	Please refer to the printed manual for detailed information.

## Data



> 95 % as determined by reducing SDS-PAGE.



Immobilized Anti-Human CD24 mAb at 2 $\mu$ g/ml (100  $\mu$ l/well) can bind Human CD24-Fc: Biotinylated by NHS-biotin prior to testing. The ED50 of Human CD24-Fc is 7.62 ng/ml.

## Background

Signal Transducer CD24 is a heavily and variably glycosylated GPI-linked sialoprotein. Human CD24 is expressed on B lineage cells and granulocytes, on epithelial, neuronal, and muscle cells, and on a range of tumor cells. CD24 expression is

## For Research Use Only

A Reliable Research Partner in Life Science and Medicine

Toll-free: 1-888-852-8623

Web: [www.elabscience.com](http://www.elabscience.com)

Tel: 1-832-243-6086

Email: [techsupport@elabscience.com](mailto:techsupport@elabscience.com)

Fax: 1-832-243-6017

# Recombinant Human Signal Transducer CD24/CD24 (C-Fc)

**DIA • AN**®  
by Elabscience

Catalog Number:PKSH033968

regulated during lineage development and with the activation of various cell types. Antibody crosslinking of CD24 enhances the induction of apoptosis in B and T lymphocytes which contributes to negative selection and the induction of immune tolerance. CD24 on antigen presenting cells cooperates with B7 molecules in the costimulation of T cells. CD24 associates in cis with Siglec10 and with the danger-associated molecules HMGB1, HSP70, or HSP90 which are released from necrotic or damaged cells. Formation of these ternary complexes fills a protective role: the resulting Siglec10 signaling inhibits inflammatory responses that are otherwise induced by extracellular DAMPs.

---

## For Research Use Only

A Reliable Research Partner in Life Science and Medicine

Toll-free: 1-888-852-8623

Tel: 1-832-243-6086

Fax: 1-832-243-6017

Web: [www.elabscience.com](http://www.elabscience.com)

Email: [techsupport@elabscience.com](mailto:techsupport@elabscience.com)