

Recombinant Human Receptor Tyrosine-Protein Kinase ErbB-3/HER3 (C-6His-Avi) Biotinylated



Catalog Number:PKSH033987

Note: Centrifuge before opening to ensure complete recovery of vial contents.

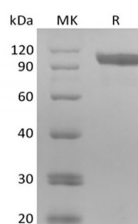
Description

Synonyms	Proto-oncogene-like protein c-ErbB-3;Tyrosine kinase-type cell surface receptor HER3;ERBB3;HER3
Species	Human
Expression Host	HEK293 Cells
Sequence	Ser20-Thr643
Accession	P21860
Calculated Molecular Weight	71.3 kDa
Observed molecular weight	90-120 kDa
Tag	C-His-Avi

Properties

Purity	> 95 % as determined by reducing SDS-PAGE.
Endotoxin	< 1.0 EU per µg of the protein as determined by the LAL method.
Storage	Generally, lyophilized proteins are stable for up to 12 months when stored at -20 to -80°C. Reconstituted protein solution can be stored at 4-8°C for 2-7 days. Aliquots of reconstituted samples are stable at < -20°C for 3 months.
Shipping	This product is provided as lyophilized powder which is shipped with ice packs.
Formulation	Lyophilized from a 0.2 µm filtered solution of PBS, pH 7.4. Normally 5 % - 8 % trehalose, mannitol and 0.01% Tween80 are added as protectants before lyophilization. Please refer to the specific buffer information in the printed manual.
Reconstitution	Please refer to the printed manual for detailed information.

Data



> 95 % as determined by reducing SDS-PAGE.

Background

Receptor tyrosine-protein kinase erbB-3 is an enzyme that in humans is encoded by the ERBB3 gene. This gene encodes a member of the epidermal growth factor receptor (EGFR) family of receptor tyrosine kinases. ERBB3 belongs to the protein kinase superfamily, tyr protein kinase family and EGF receptor subfamily. It contains 1 protein kinase domain and it is expressed in Epithelial tissues and brain. This membrane-bound protein has a neuregulin binding domain but not an active kinase domain. It therefore can bind this ligand but not convey the signal into the cell through protein phosphorylation. However, it does form heterodimers with other EGF receptor family members which do have kinase activity.

For Research Use Only

A Reliable Research Partner in Life Science and Medicine

Toll-free: 1-888-852-8623

Web: www.elabscience.com

Tel: 1-832-243-6086

Email: techsupport@elabscience.com

Fax: 1-832-243-6017