

# Recombinant Human Leukocyte Ig-Like Receptor A5/LILRA5/CD85f (C-6His-Avi) Biotinylated

Catalog Number:PKSH034006

**Note:** Centrifuge before opening to ensure complete recovery of vial contents.

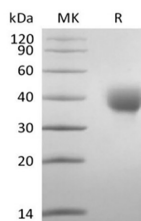
## Description

<b>Synonyms</b>	Leukocyte immunoglobulin-like receptor subfamily A member 5;CD85 antigen-like family member F;Immunoglobulin-like transcript 11;ILT-11;Leukocyte immunoglobulin-like receptor 9;LIR-9;CD85f;LILRA5;LILRB7
<b>Species</b>	Human
<b>Expression Host</b>	HEK293 Cells
<b>Sequence</b>	Gly42-Arg268
<b>Accession</b>	A6NI73
<b>Calculated Molecular Weight</b>	27.9 kDa
<b>Observed molecular weight</b>	35-45 kDa
<b>Tag</b>	C-His-Avi

## Properties

<b>Purity</b>	> 95 % as determined by reducing SDS-PAGE.
<b>Endotoxin</b>	< 1.0 EU per µg of the protein as determined by the LAL method.
<b>Storage</b>	Generally, lyophilized proteins are stable for up to 12 months when stored at -20 to -80°C. Reconstituted protein solution can be stored at 4-8°C for 2-7 days. Aliquots of reconstituted samples are stable at < -20°C for 3 months.
<b>Shipping</b>	This product is provided as lyophilized powder which is shipped with ice packs.
<b>Formulation</b>	Lyophilized from a 0.2 µm filtered solution of PBS, pH 7.4. Normally 5 % - 8 % trehalose, mannitol and 0.01% Tween80 are added as protectants before lyophilization. Please refer to the specific buffer information in the printed manual.
<b>Reconstitution</b>	Please refer to the printed manual for detailed information.

## Data



> 95 % as determined by reducing SDS-PAGE.

## Background

Leukocyte Immunoglobulin-like Receptor Subfamily A Member 5 (LILRA5) is a member of the leukocyte immunoglobulin-like receptors (LILR), comprise a family of activating and inhibitory type immunoreceptors. LILRA5 consists of a 227 amino acid (aa) extracellular domain (ECD), a 21 aa transmembrane segment, and a 10 aa cytoplasmic tail. The ECD contains two Ig-like domains and the transmembrane segment contains a positively charged aspartic acid residue which may mediate its association with the signaling molecule, FcR common gamma chain. LILRA5 is expressed by monocytes, macrophages, and neutrophils. Cross-linking of LILRA5 on monocytes induces the expression of pro-

## For Research Use Only

A Reliable Research Partner in Life Science and Medicine

Toll-free: 1-888-852-8623

Web: [www.elabscience.com](http://www.elabscience.com)

Tel: 1-832-243-6086

Email: [techsupport@elabscience.com](mailto:techsupport@elabscience.com)

Fax: 1-832-243-6017

# Recombinant Human Leukocyte Ig-Like Receptor A5/LILRA5/CD85f (C-6His-Avi) Biotinylated



Catalog Number:PKSH034006

---

inflammatory cytokines (IL-1beta, IL-6, TNF-alpha) as well as the anti-inflammatory IL-10. It can be detected in tissues of the hematopoietic system, including bone marrow, spleen, lymph node and peripheral leukocytes. Crosslink of ILT-11 on the surface of monocytes has been shown to induce calcium flux and secretion of several proinflammatory cytokines, which suggests the roles of this protein in triggering innate immune responses.

---

## For Research Use Only

A Reliable Research Partner in Life Science and Medicine

Toll-free: 1-888-852-8623

Web: [www.elabscience.com](http://www.elabscience.com)

Tel: 1-832-243-6086

Email: [techsupport@elabscience.com](mailto:techsupport@elabscience.com)

Fax: 1-832-243-6017