

Recombinant Human Leukocyte Ig-Like Receptor A3/LILRA3/ILT6/CD85e (C-Fc)

Catalog Number:PKSH034013

Note: Centrifuge before opening to ensure complete recovery of vial contents.

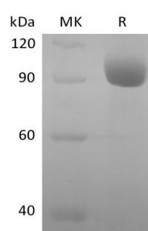
Description

Synonyms	Leukocyte immunoglobulin-like receptor subfamily A member 3;CD85 antigen-like family member E;Immunoglobulin-like transcript 6;ILT-6;Leukocyte immunoglobulin-like receptor 4;LIR-4 and Monocyte inhibitory receptor HM43/HM31
Species	Human
Expression Host	HEK293 Cells
Sequence	Gly24-Glu439
Accession	AAH28208.1
Calculated Molecular Weight	72.2 kDa
Observed molecular weight	84-98 kDa
Tag	C-Fc

Properties

Purity	> 95 % as determined by reducing SDS-PAGE.
Endotoxin	< 1.0 EU per µg of the protein as determined by the LAL method.
Storage	Generally, lyophilized proteins are stable for up to 12 months when stored at -20 to -80°C. Reconstituted protein solution can be stored at 4-8°C for 2-7 days. Aliquots of reconstituted samples are stable at < -20°C for 3 months.
Shipping	This product is provided as lyophilized powder which is shipped with ice packs.
Formulation	Lyophilized from a 0.2 µm filtered solution of PBS, pH 7.4. Normally 5 % - 8 % trehalose, mannitol and 0.01% Tween80 are added as protectants before lyophilization. Please refer to the specific buffer information in the printed manual.
Reconstitution	Please refer to the printed manual for detailed information.

Data



> 95 % as determined by reducing SDS-PAGE.

Background

Leukocyte immunoglobulin-like receptor subfamily A member 3 is also known as CD85 antigen-like family member E, Immunoglobulin-like transcript 6, ILT-6, Leukocyte immunoglobulin-like receptor 4, LIR-4 and Monocyte inhibitory receptor HM43/HM31. In humans, it is encoded by the LILRA3 gene. It acts as soluble receptor for class I MHC antigens. Binds both classical and non-classical HLA class I molecules but with reduced affinities compared to LILRB1 or LILRB2. It is detected in B-cells, natural killer (NK) cells, peripheral blood monocytes and lung.

For Research Use Only

A Reliable Research Partner in Life Science and Medicine

Toll-free: 1-888-852-8623

Web: www.elabscience.com

Tel: 1-832-243-6086

Email: techsupport@elabscience.com

Fax: 1-832-243-6017