

KLF15 Polyclonal Antibody

Catalog No. E-AB-64625

Note: Centrifuge before opening to ensure complete recovery of vial contents.

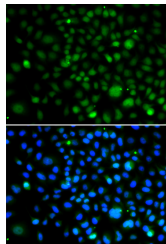
Description

Reactivity	Human
Immunogen	Recombinant fusion protein of human KLF15 (NP_054798.1).
Host	Rabbit
Isotype	IgG
Purification	Affinity purification
Conjugation	Unconjugated
Buffer	PBS with 0.02% sodium azide, 50% glycerol, pH7.3.

Applications Recommended Dilution

IF 1:50-1:200

Data



Immunofluorescence analysis of A549 cells using KLF15 Polyclonal Antibody

Preparation & Storage

Storage Store at -20°C. Avoid freeze / thaw cycles.

Background

KLF15 (Kruppel Like Factor 15) is a Protein Coding gene. Diseases associated with KLF15 include Glomerular Disease and Aortic Aneurysm. Among its related pathways are Adipogenesis and BMAL1-CLOCK, NPAS2 activates circadian gene expression. Gene Ontology (GO) annotations related to this gene include DNA-binding transcription factor activity and proximal promoter DNA-binding transcription activator activity, RNA polymerase II-specific. An important paralog of this gene is KLF5.

For Research Use Only