

KLF15 Polyclonal Antibody

Catalog Number:E-AB-64625



Note: Centrifuge before opening to ensure complete recovery of vial contents.

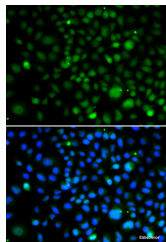
Description

Reactivity	Human
Immunogen	Recombinant fusion protein of human KLF15 (NP_054798.1).
Host	Rabbit
Isotype	IgG
Purification	Affinity purification
Conjugation	Unconjugated
Formulation	PBS with 0.02% sodium azide, 50% glycerol, pH7.3.

Applications Recommended Dilution

IF	1:50-1:200
-----------	------------

Data



Immunofluorescence analysis of A549 cells using KLF15 Polyclonal Antibody

Preparation & Storage

Storage Store at -20°C. Avoid freeze / thaw cycles.

Background

KLF15 (Kruppel Like Factor 15) is a Protein Coding gene. Diseases associated with KLF15 include Glomerular Disease and Aortic Aneurysm. Among its related pathways are Adipogenesis and BMAL1-CLOCK,NPAS2 activates circadian gene expression. Gene Ontology (GO) annotations related to this gene include DNA-binding transcription factor activity and proximal promoter DNA-binding transcription activator activity, RNA polymerase II-specific. An important paralog of this gene is KLF5.

For Research Use Only

A Reliable Research Partner in Life Science and Medicine

Toll-free: 1-888-852-8623

Web: www.elabscience.com

Tel: 1-832-243-6086

Email: techsupport@elabscience.com

Fax: 1-832-243-6017