

NRBF2 Polyclonal Antibody

Catalog No. E-AB-64626

Note: Centrifuge before opening to ensure complete recovery of vial contents.

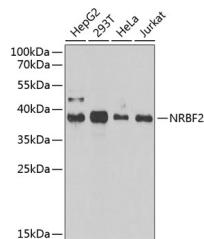
Description

Reactivity	Human, Mouse, Rat
Immunogen	Recombinant fusion protein of human NRBF2 (NP_110386.2).
Host	Rabbit
Isotype	IgG
Purification	Affinity purification
Conjugation	Unconjugated
Buffer	PBS with 0.02% sodium azide, 50% glycerol, pH7.3.

Applications Recommended Dilution

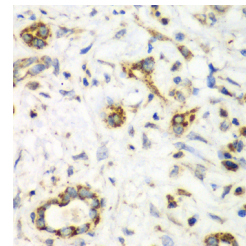
WB	1:500-1:2000
IHC	1:50-1:200
IF	1:50-1:200

Data

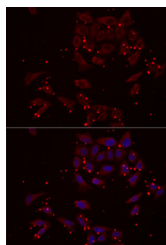


Western blot analysis of extracts of various cell lines using NRBF2 Polyclonal Antibody at dilution of 1:1000.

Observed Mw:38kDa
Calculated Mw:26kDa/31kDa/32kDa



Immunohistochemistry of paraffin-embedded Human liver cancer using NRBF2 Polyclonal Antibody at dilution of 1:100 (40x lens).



Immunofluorescence analysis of MCF7 cells using NRBF2 Polyclonal Antibody

Preparation & Storage

For Research Use Only

Storage Store at -20°C. Avoid freeze / thaw cycles.

Background

NRBF2 (Nuclear Receptor Binding Factor 2) is a Protein Coding gene. Diseases associated with NRBF2 include Alzheimer Disease. Among its related pathways are Spinocerebellar ataxia and Parkinson disease.