

Recombinant Human Delta-like Protein 1/DLL1 (C-Fc)

Catalog Number:PKSH034039



Note: Centrifuge before opening to ensure complete recovery of vial contents.

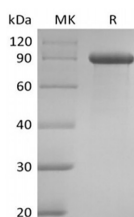
Description

Synonyms	Delta-like protein 1;Drosophila Delta homolog 1;Delta1;H-Delta-1;DLL1
Species	Human
Expression Host	HEK293 Cells
Sequence	Gln18-Gly540
Accession	O00548
Calculated Molecular Weight	83.3 kDa
Observed molecular weight	90-100 kDa
Tag	C-Fc

Properties

Purity	> 95 % as determined by reducing SDS-PAGE.
Endotoxin	< 1.0 EU per µg of the protein as determined by the LAL method.
Storage	Generally, lyophilized proteins are stable for up to 12 months when stored at -20 to -80°C. Reconstituted protein solution can be stored at 4-8°C for 2-7 days. Aliquots of reconstituted samples are stable at < -20°C for 3 months.
Shipping	This product is provided as lyophilized powder which is shipped with ice packs.
Formulation	Lyophilized from a 0.2 µm filtered solution of 20mM Hepes, 150mM NaCl, 1mM EDTA, pH 7.4. Normally 5 % - 8 % trehalose, mannitol and 0.01 % Tween80 are added as protectants before lyophilization. Please refer to the specific buffer information in th
Reconstitution	Please refer to the printed manual for detailed information.

Data



> 95 % as determined by reducing SDS-PAGE.

Background

Delta-like protein 1 (DLL1) is a type I transmembrane protein that belongs to the Delta/Serrate/Lag2 (DSL) family of Notch ligands. Mature human DLL1 consists of a 528 amino acid (aa) extracellular domain (ECD) with one DSL domain and eight EGF-like repeats, a 23 aa transmembrane segment, and a 155 aa cytoplasmic domain. Within the ECD, human DLL1 shares 91% aa sequence identity with mouse and rat DLL1. The residual membranebound portion of DLL1 can be cleave by presenilin-dependent γ -secretase, enabling the cytoplasmic domain to migrate to the nucleus. DLL1 localizes to adherens junctions on neuronal processes through its association with the scaffolding protein MAGI1. DLL1 is widely expressed, and it plays an important role in embryonic somite formation, cochlear hair cell differentiation, plus B and T

For Research Use Only

A Reliable Research Partner in Life Science and Medicine

Toll-free: 1-888-852-8623

Web: www.elabscience.com

Tel: 1-832-243-6086

Email: techsupport@elabscience.com

Fax: 1-832-243-6017

Recombinant Human Delta-like Protein 1/DLL1 (C-Fc)

Catalog Number:PKSH034039



lymphocyte differentiation. The upregulation of DLL1 in arterial endothelial cells following injury or angiogenic stimulation is central to postnatal arteriogenesis. DLL1 is also overexpressed in cervical carcinoma and glioma and contributes to tumor progression.

For Research Use Only

A Reliable Research Partner in Life Science and Medicine

Toll-free: 1-888-852-8623

Tel: 1-832-243-6086

Fax: 1-832-243-6017

Web: www.elabscience.com

Email: techsupport@elabscience.com