

Recombinant Human HLA-A*0201 GP100 complex Protein (C-10His)



Catalog Number:PKSH034047

Note: Centrifuge before opening to ensure complete recovery of vial contents.

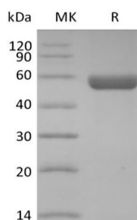
Description

Synonyms	HLA-A*0201 GP100 complex
Species	Human
Expression Host	HEK293 Cells
Sequence	IMDQVPFSV&Ile21-Met119&Gly25-Ile308(Ala269Val)
Accession	P61769&P01892
Calculated Molecular Weight	49.1 kDa
Observed molecular weight	50-60 kDa
Tag	C-His

Properties

Purity	> 95 % as determined by reducing SDS-PAGE.
Endotoxin	< 1.0 EU per µg of the protein as determined by the LAL method.
Storage	Store at < -20°C, stable for 6 months. Please minimize freeze-thaw cycles.
Shipping	This product is provided as liquid. It is shipped at frozen temperature with blue ice/gel packs. Upon receipt, store it immediately at < - 20°C.
Formulation	Supplied as a 0.2 µm filtered solution of PBS, 0.5M Arg, 0.1M Glu, pH 7.4.
Reconstitution	Not Applicable

Data



> 95 % as determined by reducing SDS-PAGE.

Background

GP100 Plays a central role in the biogenesis of melanosomes. Involved in the maturation of melanosomes from stage I to II. The transition from stage I melanosomes to stage II melanosomes involves an elongation of the vesicle, and the appearance within of distinct fibrillar structures.

For Research Use Only

A Reliable Research Partner in Life Science and Medicine

Toll-free: 1-888-852-8623

Web: www.elabscience.com

Tel: 1-832-243-6086

Email: techsupport@elabscience.com

Fax: 1-832-243-6017