

Recombinant Human HLA-A*0201 WT-1 complex Protein (C-10His)



Catalog Number:PKSH034048

Note: Centrifuge before opening to ensure complete recovery of vial contents.

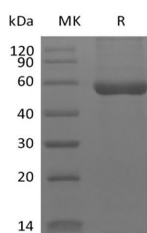
Description

Synonyms	HLA-A*0201 WT-1 complex
Species	Human
Expression Host	HEK293 Cells
Sequence	RMFPNAPYL&Ile21-Met119&Gly25-Ile308(Ala269Val)
Accession	P61769&P01892
Calculated Molecular Weight	49.1 kDa
Observed molecular weight	55-60 kDa
Tag	C-His

Properties

Purity	> 95 % as determined by reducing SDS-PAGE.
Endotoxin	< 1.0 EU per µg of the protein as determined by the LAL method.
Storage	Generally, lyophilized proteins are stable for up to 12 months when stored at -20 to -80°C. Reconstituted protein solution can be stored at 4-8°C for 2-7 days. Aliquots of reconstituted samples are stable at < -20°C for 3 months.
Shipping	This product is provided as lyophilized powder which is shipped with ice packs.
Formulation	Lyophilized from a 0.2 µm filtered solution of 20mM PB, 150mM NaCl, 5% Trehalose, 5% Mannitol, 0.01% Tween 80, pH 7.4. Normally 5 % - 8 % trehalose, mannitol and 0.01% Tween80 are added as protectants before lyophilization. Please refer to the spe
Reconstitution	Please refer to the printed manual for detailed information.

Data



> 95 % as determined by reducing SDS-PAGE.

Background

The WT1 protein plays an important role in cellular development and cell survival. Regulates the expression of numerous target genes, including EPO. Plays an essential role for development of the urogenital system. It has a tumor suppressor as well as an oncogenic role in tumor formation.

For Research Use Only

A Reliable Research Partner in Life Science and Medicine

Toll-free: 1-888-852-8623

Web: www.elabscience.com

Tel: 1-832-243-6086

Email: techsupport@elabscience.com

Fax: 1-832-243-6017