

# Recombinant Mouse Sialic acid-binding Ig-like lectin 15/Siglec-15/CD33L3 (C-6His)

Catalog Number:PKSM041394

**Note:** Centrifuge before opening to ensure complete recovery of vial contents.

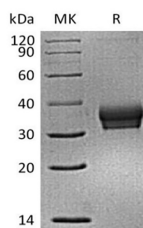
## Description

<b>Synonyms</b>	Angiopoietin-related protein 4;425O18-1;Angiopoietin-like protein 4;Fasting-induced adipose factor;Hepatic fibrinogen/angiopoietin-related protein;HFARP;Secreted protein Bk89;Angptl4;Farp;Fiaf;Ng27
<b>Species</b>	Mouse
<b>Expression Host</b>	HEK293 Cells
<b>Sequence</b>	Arg24-Thr262
<b>Accession</b>	A7E1W8
<b>Calculated Molecular Weight</b>	26.5 kDa
<b>Observed molecular weight</b>	30-40 kDa
<b>Tag</b>	C-His
<b>Bioactivity</b>	Loaded Anti-Human Siglec15 mAb-mFc on AMQ Biosensor, can bind Mouse Siglec-15-His with an affinity constant of 0.33 nM as determined in BLI assay.

## Properties

<b>Purity</b>	> 95 % as determined by reducing SDS-PAGE.
<b>Endotoxin</b>	< 1.0 EU per µg of the protein as determined by the LAL method.
<b>Storage</b>	Generally, lyophilized proteins are stable for up to 12 months when stored at -20 to -80°C. Reconstituted protein solution can be stored at 4-8°C for 2-7 days. Aliquots of reconstituted samples are stable at < -20°C for 3 months.
<b>Shipping</b>	This product is provided as lyophilized powder which is shipped with ice packs.
<b>Formulation</b>	Lyophilized from a 0.2 µm filtered solution of PBS, 150mM NaCl, 5% Thehalose, 0.3% Chaps, pH 7.4. Normally 5 % - 8 % trehalose, mannitol and 0.01 % Tween80 are added as protectants before lyophilization. Please refer to the specific buffer informat
<b>Reconstitution</b>	Please refer to the printed manual for detailed information.

## Data



> 95 % as determined by reducing SDS-PAGE.

## Background

Human Siglec-15 is a transmembrane glycoprotein in the Siglec family. Siglecs are type I transmembrane proteins where the NH<sub>3</sub><sup>+</sup>-terminus is in the extracellular space and the COO<sup>-</sup>-terminus is cytosolic. Each Siglec contains an N-terminal V-type immunoglobulin domain (Ig domain) which acts as the binding receptor for sialic acid. These lectins are placed

## For Research Use Only

A Reliable Research Partner in Life Science and Medicine

Toll-free: 1-888-852-8623

Web: [www.elabscience.com](http://www.elabscience.com)

Tel: 1-832-243-6086

Email: [techsupport@elabscience.com](mailto:techsupport@elabscience.com)

Fax: 1-832-243-6017

# Recombinant Mouse Sialic acid-binding Ig-like lectin 15/Siglec-15/CD33L3 (C-6His)



Catalog Number: PKSM041394

---

into the group of I-type lectins because the lectin domain is an immunoglobulin fold. All Siglecs are extended from the cell surface by C2-type Ig domains which have no binding activity. Siglecs differ in the number of these C2-type domains. Human Siglec-15 consists of a 244 amino acid (aa) extracellular domain (ECD) with two Ig-like domains, a 21 aa transmembrane segment, and a 44 aa cytoplasmic domain. Siglec-15 function is important for osteoclast formation and TRANCE/RANK Ligand signaling in osteoclasts

---

## For Research Use Only

A Reliable Research Partner in Life Science and Medicine

Toll-free: 1-888-852-8623

Tel: 1-832-243-6086

Fax: 1-832-243-6017

Web: [www.elabscience.com](http://www.elabscience.com)

Email: [techsupport@elabscience.com](mailto:techsupport@elabscience.com)