

# Recombinant Mouse TPBG/5T4 (C-6His)

Catalog Number:PKSM041401



**Note:** Centrifuge before opening to ensure complete recovery of vial contents.

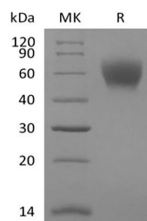
## Description

<b>Synonyms</b>	5T4 Protein;Human;5T4AG Protein;Human;M6P1 Protein;Human;WAIF1 Protein;Human
<b>Species</b>	Mouse
<b>Expression Host</b>	HEK293 Cells
<b>Sequence</b>	Ser32-Ser361
<b>Accession</b>	Q9Z0L0
<b>Calculated Molecular Weight</b>	36.6 kDa
<b>Observed molecular weight</b>	50-70 kDa
<b>Tag</b>	C-His

## Properties

<b>Purity</b>	> 95 % as determined by reducing SDS-PAGE.
<b>Endotoxin</b>	< 1.0 EU per µg of the protein as determined by the LAL method.
<b>Storage</b>	Store at < -20°C, stable for 6 months. Please minimize freeze-thaw cycles.
<b>Shipping</b>	This product is provided as liquid. It is shipped at frozen temperature with blue ice/gel packs. Upon receipt, store it immediately at < - 20°C.
<b>Formulation</b>	Supplied as a 0.2 µm filtered solution of PBS, pH7.4.
<b>Reconstitution</b>	Not Applicable

## Data



> 95 % as determined by reducing SDS-PAGE.

## Background

Trophoblast glycoprotein, also known as TPBG and 5T4, it belongs to the LRR family of proteins. The C-terminus of LRR N-terminal cap (LRRNT) and LRR 1 are essential for the inhibition of the Wnt signaling pathway. TPBG may function as an inhibitor of Wnt/beta-catenin signaling by indirectly interacting with LRP6 and blocking Wnt3a-dependent LRP6 internalization. It expressed by all types of trophoblasts as early as 9 weeks of development. In adult tissues, the expression is limited to a few epithelial cell types but is found on a variety of carcinoma.

## For Research Use Only

A Reliable Research Partner in Life Science and Medicine

Toll-free: 1-888-852-8623

Web: [www.elabscience.com](http://www.elabscience.com)

Tel: 1-832-243-6086

Email: [techsupport@elabscience.com](mailto:techsupport@elabscience.com)

Fax: 1-832-243-6017