

Recombinant Mouse Leptin Receptor/LEPR/CD295 (C-10His)



Catalog Number:PKSM041415

Note: Centrifuge before opening to ensure complete recovery of vial contents.

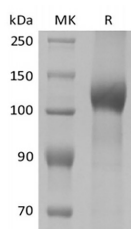
Description

Synonyms	Leptin receptor;LEP-R;HuB219;OB receptor;OB-R;CD295;LEPR;DB;OBR
Species	Mouse
Expression Host	HEK293 Cells
Sequence	Leu22-Gly839
Accession	P48356
Calculated Molecular Weight	93.0 kDa
Observed molecular weight	120-150 kDa
Tag	C-His

Properties

Purity	> 90 % as determined by reducing SDS-PAGE.
Endotoxin	< 1.0 EU per µg of the protein as determined by the LAL method.
Storage	Generally, lyophilized proteins are stable for up to 12 months when stored at -20 to -80°C. Reconstituted protein solution can be stored at 4-8°C for 2-7 days. Aliquots of reconstituted samples are stable at < -20°C for 3 months.
Shipping	This product is provided as lyophilized powder which is shipped with ice packs.
Formulation	Lyophilized from a 0.2 µm filtered solution of PBS, pH 7.4. Normally 5 % - 8 % trehalose, mannitol and 0.01% Tween80 are added as protectants before lyophilization. Please refer to the specific buffer information in the printed manual.
Reconstitution	Please refer to the printed manual for detailed information.

Data



> 90 % as determined by reducing SDS-PAGE.

Background

The Leptin receptor is a member of the Class I cytokine receptor family. It mediates the activities of Leptin, a multi-functional hormone produced primarily by adipose tissues that plays roles in food intake, energy metabolism, angiogenesis, reproduction, hematopoiesis, bone metabolism, and immune function. The human Leptin R gene encodes 1165 amino acids (aa) including a signal peptide, an extracellular region with cytokine receptor homology (CRH), multiple fibronectin type III domains and a WSXWS motif, a transmembrane domain, and a cytoplasmic domain that supports JAK/STAT signaling. Soluble Leptin R is the primary Leptin-binding protein in blood, where it maintains a pool of available bioactive Leptin, delays Leptin clearance from circulation, and down-regulates blood-brain transmission of Leptin. In humans, soluble Leptin R levels are inversely proportional to adiposity and are elevated in females versus

For Research Use Only

A Reliable Research Partner in Life Science and Medicine

Toll-free: 1-888-852-8623

Web: www.elabscience.com

Tel: 1-832-243-6086

Email: techsupport@elabscience.com

Fax: 1-832-243-6017

Recombinant Mouse Leptin Receptor/LEPR/CD295 (C-10His)



Catalog Number:PKSM041415

males. Soluble Leptin R is also found up-regulated in patients with chronic heart failure, end-stage renal disease, and anorexia. It is expressed by tumor-initiating stem cells, and is proposed as a link between cancer and obesity.

For Research Use Only

A Reliable Research Partner in Life Science and Medicine

Toll-free: 1-888-852-8623

Web: www.elabscience.com

Tel: 1-832-243-6086

Email: techsupport@elabscience.com

Fax: 1-832-243-6017