

# Recombinant Mouse IL-2 Receptor Subunit Beta/IL-2RB/CD122 (C-6His)

Catalog Number:PKSM041436

**Note:** Centrifuge before opening to ensure complete recovery of vial contents.

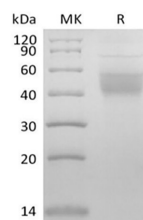
## Description

<b>Synonyms</b>	Interleukin-2 receptor subunit beta;IL2RB;IL-2 receptor subunit beta;IL-2R subunit beta;High affinity IL-2 receptor subunit beta;CD122
<b>Species</b>	Mouse
<b>Expression Host</b>	HEK293 Cells
<b>Sequence</b>	Ala27-Glu240
<b>Accession</b>	P16297
<b>Calculated Molecular Weight</b>	26.1 kDa
<b>Observed molecular weight</b>	40-60 kDa
<b>Tag</b>	C-His

## Properties

<b>Purity</b>	> 90 % as determined by reducing SDS-PAGE.
<b>Endotoxin</b>	< 1.0 EU per µg of the protein as determined by the LAL method.
<b>Storage</b>	Generally, lyophilized proteins are stable for up to 12 months when stored at -20 to -80°C. Reconstituted protein solution can be stored at 4-8°C for 2-7 days. Aliquots of reconstituted samples are stable at < -20°C for 3 months.
<b>Shipping</b>	This product is provided as lyophilized powder which is shipped with ice packs.
<b>Formulation</b>	Lyophilized from a 0.2 µm filtered solution of PBS, pH 7.4. Normally 5 % - 8 % trehalose, mannitol and 0.01% Tween80 are added as protectants before lyophilization. Please refer to the specific buffer information in the printed manual.
<b>Reconstitution</b>	Please refer to the printed manual for detailed information.

## Data



> 90 % as determined by reducing SDS-PAGE.

## Background

IL-2RB, also known as interleukin-2 receptor subunit beta, is the receptor for interleukin-2. IL2 receptor complex is involved in receptor mediated endocytosis and transduces the mitogenic signals of IL2. IL2 receptor complex has three forms with respect to ability to bind IL2. IL-2RB is belonged to a type I membrane protein, and has a 26 residue signal peptide, a 214 residue extracellular region, a 25 residue transmembrane region and a 286 residue cytoplasmic domain. IL-2RB is the subunit critical for receptor-mediated signaling via physically or functionally coupling to other signaling molecules, such as the Jak-STAT and Src-family protein tyrosine kinase although it lacks apparent catalytic motifs.

## For Research Use Only

A Reliable Research Partner in Life Science and Medicine

Toll-free: 1-888-852-8623

Web: [www.elabscience.com](http://www.elabscience.com)

Tel: 1-832-243-6086

Email: [techsupport@elabscience.com](mailto:techsupport@elabscience.com)

Fax: 1-832-243-6017