

# Recombinant Rhesus Macaque Angiotensin-Converting Enzyme 2/ACE-2 (C-10His)

Catalog Number:PKSQ050119

**Note:** Centrifuge before opening to ensure complete recovery of vial contents.

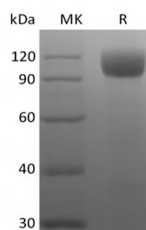
## Description

<b>Synonyms</b>	Angiotensin-Converting Enzyme 2;ACE-Related Carboxypeptidase;Angiotensin-Converting Enzyme Homolog;ACEH;Metalloprotease MPROT15;ACE2
<b>Species</b>	Rhesus Macaque
<b>Expression Host</b>	HEK293 Cells
<b>Sequence</b>	Gln18-Val739
<b>Accession</b>	ACI04564.1
<b>Calculated Molecular Weight</b>	85.1 kDa
<b>Observed molecular weight</b>	90-120 kDa
<b>Tag</b>	C-His
<b>Bioactivity</b>	Immobilized Rhesus Macaque ACE-2-His(Cat#PKSQ050119)at 5µg/ml (100 µl/well) can bind 2019-nCoV S Protein RBD-SD1-mFc(Cat#PKSR030476). The ED50 of Recombinant 2019-nCoV S Protein RBD-SD1-mFc(Cat#PKSR030476) is 16.8 ng/ml.

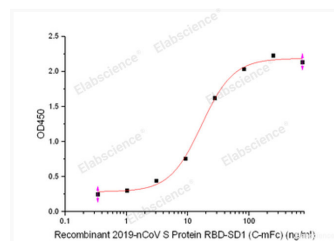
## Properties

<b>Purity</b>	> 95 % as determined by reducing SDS-PAGE.
<b>Endotoxin</b>	< 1.0 EU per µg of the protein as determined by the LAL method.
<b>Storage</b>	Store at < -20°C, stable for 6 months. Please minimize freeze-thaw cycles.
<b>Shipping</b>	This product is provided as liquid. It is shipped at frozen temperature with blue ice/gel packs. Upon receipt, store it immediately at < - 20°C.
<b>Formulation</b>	Supplied as a 0.2 µm filtered solution of 25mM Tris-HCl, 150mM NaCl, 1mM ZnCl <sub>2</sub> , pH 7.5.
<b>Reconstitution</b>	Not Applicable

## Data



> 95 % as determined by reducing SDS-PAGE.



Immobilized Rhesus Macaque ACE-2-His(Cat#PKSQ050119)at 5µg/ml (100 µl/well) can bind 2019-nCoV S Protein RBD-SD1-mFc(Cat#PKSR030476). The ED50 of Recombinant 2019-nCoV S Protein RBD-SD1-mFc(Cat#PKSR030476) is 16.8 ng/ml.

## Background

Angiotensin-Converting Enzyme 2 (ACE-2) is an integral membrane protein and a zinc metalloprotease of the ACE

## For Research Use Only

A Reliable Research Partner in Life Science and Medicine

Toll-free: 1-888-852-8623

Web: [www.elabscience.com](http://www.elabscience.com)

Tel: 1-832-243-6086

Email: [techsupport@elabscience.com](mailto:techsupport@elabscience.com)

Fax: 1-832-243-6017

# Recombinant Rhesus Macaque Angiotensin-Converting Enzyme 2/ACE-2 (C-10His)



Catalog Number:PKSQ050119

---

family, the ACE family includes somatic and germinal ACE. ACE-2 cleaves angiotensins I and II as a carboxypeptidase, ACE-2 converts angiotensin I to angiotensin 1-9, and angiotensin II to angiotensin 1-7. ACE-2 is also able to hydrolyze apelin-13 and dynorphin-13 with high efficiency. ACE-2 can be high expressed in testis, kidney and heart, in colon, small intestine and ovary at moderate levels. Captopril and lisinopril as the classical ACE inhibitor don't inhibit ACE-2 activity. ACE-2 may play an important role in regulating the heart function.

---

## For Research Use Only

A Reliable Research Partner in Life Science and Medicine

Toll-free: 1-888-852-8623

Web: [www.elabscience.com](http://www.elabscience.com)

Tel: 1-832-243-6086

Email: [techsupport@elabscience.com](mailto:techsupport@elabscience.com)

Fax: 1-832-243-6017