

Recombinant Rhesus Macaque Tumor-associated Calcium Signal Transducer 2/TROP-2 (C-6His)



Catalog Number:PKSQ050121

Note: Centrifuge before opening to ensure complete recovery of vial contents.

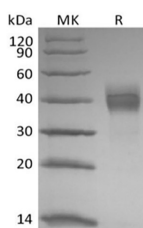
Description

Synonyms	Tumor-associated calcium signal transducer 2;Membrane component chromosome 1 surfacemarker 1;Cell surface glycoprotein Trop-2;TACSTD2;TROP2
Species	Rhesus Macaque
Expression Host	HEK293 Cells
Sequence	His27-Arg272
Accession	XP_001114599.1
Calculated Molecular Weight	28.7 kDa
Observed molecular weight	38-45 kDa
Tag	C-His
Bioactivity	Loaded Anti-Human TROP-2 mAb-Fc on Protein A Biosensor, can bind Rhesus Macaque TROP-2-His with an affinity constant of 0.29 nM as determined in BLI assay.

Properties

Purity	> 95 % as determined by reducing SDS-PAGE.
Endotoxin	< 1.0 EU per µg of the protein as determined by the LAL method.
Storage	Generally, lyophilized proteins are stable for up to 12 months when stored at -20 to -80°C. Reconstituted protein solution can be stored at 4-8°C for 2-7 days. Aliquots of reconstituted samples are stable at < -20°C for 3 months.
Shipping	This product is provided as lyophilized powder which is shipped with ice packs.
Formulation	Lyophilized from a 0.2 µm filtered solution of PBS, pH 7.4. Normally 5 % - 8 % trehalose, mannitol and 0.01% Tween80 are added as protectants before lyophilization. Please refer to the specific buffer information in the printed manual.
Reconstitution	Please refer to the printed manual for detailed information.

Data



> 95 % as determined by reducing SDS-PAGE.

Background

Tumor associated calcium signal transducer 2 (TACSTD2, TROP-2) is a type I cell surface glycoprotein that is highly expressed on human carcinomas. It was originally identified as an antigen present on human gastrointestinal tumors and is the second of two members of this family. Human and mouse TROP-2 share 87% amino acid (aa) similarity. TROP-2 is capable of transducing an intracellular calcium signal and may play a role in tumor growth. It also has adhesive functions.

For Research Use Only

A Reliable Research Partner in Life Science and Medicine

Toll-free: 1-888-852-8623

Web: www.elabscience.com

Tel: 1-832-243-6086

Email: techsupport@elabscience.com

Fax: 1-832-243-6017