

TET3 Polyclonal Antibody

Catalog Number:E-AB-64645

Note: Centrifuge before opening to ensure complete recovery of vial contents.

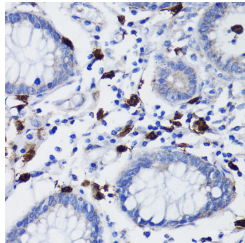
Description

Reactivity	Human
Immunogen	Recombinant fusion protein of human TET3 (NP_001274420.1).
Host	Rabbit
Isotype	IgG
Purification	Affinity purification
Conjugation	Unconjugated
Formulation	PBS with 0.02% sodium azide, 50% glycerol, pH7.3.

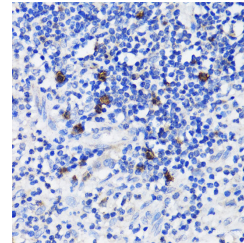
Applications Recommended Dilution

IHC	1:50-1:200
IF	1:50-1:200

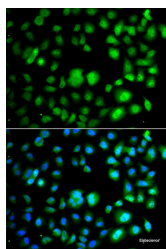
Data



Immunohistochemistry of paraffin-embedded Human colon carcinoma using TET3 Polyclonal Antibody at dilution of 1:200 (40x lens).



Immunohistochemistry of paraffin-embedded Human appendix using TET3 Polyclonal Antibody at dilution of 1:200 (40x lens).



Immunofluorescence analysis of A549 cells using TET3 Polyclonal Antibody

Preparation & Storage

Storage Store at -20°C. Avoid freeze / thaw cycles.

Background

TET3 (Tet Methylcytosine Dioxygenase 3) is a Protein Coding gene. Diseases associated with TET3 include Beck-Fahrner Syndrome and Miles-Carpenter Syndrome. Among its related pathways are MECP2 and Associated Rett Syndrome and Activated PKN1 stimulates transcription of AR (androgen receptor) regulated genes KLK2 and KLK3. Gene Ontology (GO) annotations related to this gene include methylcytosine dioxygenase activity. An important paralog of this gene is TET2.

For Research Use Only

A Reliable Research Partner in Life Science and Medicine

Toll-free: 1-888-852-8623

Web: www.elabscience.com

Tel: 1-832-243-6086

Email: techsupport@elabscience.com

Fax: 1-832-243-6017