

(KO Validated) ARHGDI Polyclonal Antibody

Catalog No. E-AB-64658

Note: Centrifuge before opening to ensure complete recovery of vial contents.

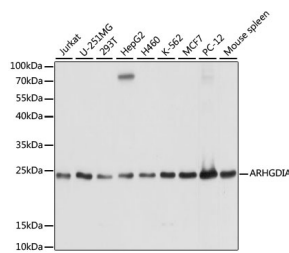
Description

Reactivity	Human, Mouse, Rat
Immunogen	Recombinant fusion protein of human ARHGDI
Host	Rabbit
Isotype	IgG
Purification	Affinity purification
Conjugation	Unconjugated
Buffer	PBS with 0.02% sodium azide, 50% glycerol, pH7.3.

Applications Recommended Dilution

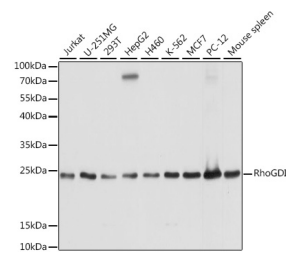
WB 1:500-1:2000

Data



Western blot analysis of extracts from normal (control) and RhoGDI knockout (KO) 293T cells using RhoGDI Polyclonal Antibody at 1:1000 dilution.

Observed Mw: 23kDa
Calculated Mw: 18kDa/23kDa



Western blot analysis of extracts of various cell lines using RhoGDI Polyclonal Antibody at 1:1000 dilution.

Preparation & Storage

Storage Store at -20°C. Avoid freeze / thaw cycles.

Background

This gene encodes a protein that plays a key role in the regulation of signaling through Rho GTPases. The encoded protein inhibits the disassociation of Rho family members from GDP (guanine diphosphate), thereby maintaining these factors in an inactive state. Activity of this protein is important in a variety of cellular processes, and expression of this gene may be altered in tumors. Mutations in this gene have been found in individuals with nephrotic syndrome, type 8. Alternate splicing results in multiple transcript variants.

For Research Use Only